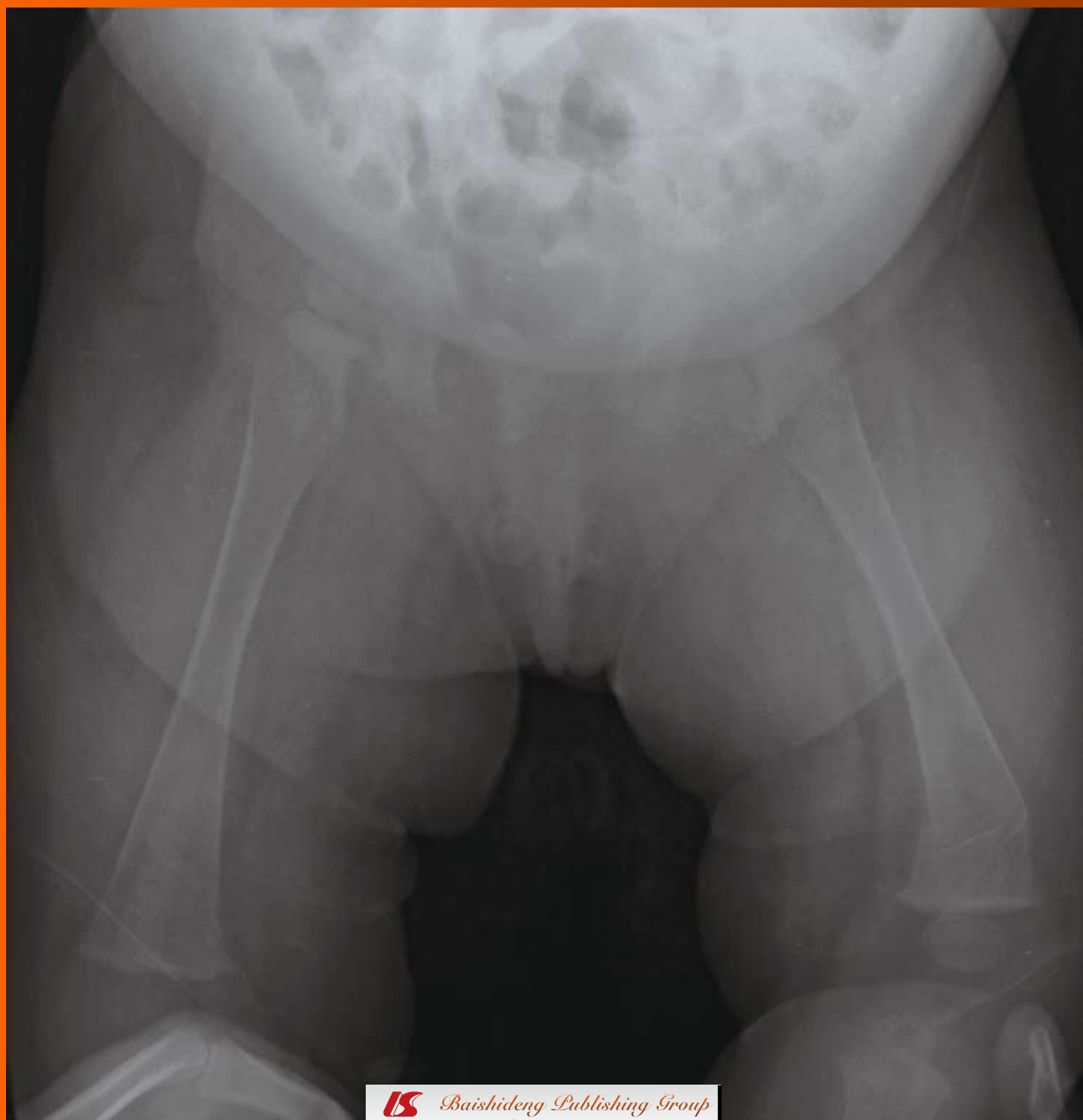


# World Journal of *Hepatology*

*World J Hepatol* 2012 October 27; 4(10): 274-290





# World Journal of Hepatology

*A peer-reviewed, online, open-access journal of hepatology*

## Editorial Board

2009-2013

The *World Journal of Hepatology* Editorial Board consists of 573 members, representing a team of worldwide experts in hepatology. They are from 46 countries, including Argentina (4), Australia (7), Austria (2), Bangladesh (1), Belgium (3), Botswana (2), Brazil (8), Brunei Darussalam (1), Bulgaria (1), Canada (10), Chile (1), China (89), Denmark (1), Egypt (3), Finland (1), France (15), Gambia (1), Germany (28), Greece (8), Hungary (3), India (20), Ireland (1), Israel (7), Italy (65), Japan (45), Malaysia (1), Mexico (4), Netherlands (4), Pakistan (2), Poland (1), Portugal (1), Philippines (1), Romania (1), Saudi Arabia (1), Singapore (4), South Korea (17), Spain (22), Sri Lanka (1), Sudan (1), Switzerland (2), Thailand (6), Tunisia (2), Turkey (13), United Kingdom (17), United States (144), and Venezuela (1).

### EDITOR-IN-CHIEF

Masatoshi Kudo, *Osaka*

### STRATEGY ASSOCIATE EDITORS-IN-CHIEF

Paolo Cabassa, *Brescia*  
Cheng-Shyong Chang, *Changhua*  
Jing-Gung Chung, *Taichung*  
Yi-Ming Chen, *Taipei*  
Antonio Craxi, *Palermo*  
Moses S Elisaf, *Ioannina*  
Fabio Grizzi, *Milan*  
Masatoshi Kudo, *Osaka*  
Yasuhiro Kuramitsu, *Yamaguchi*  
Huan-Yao Lei, *Tainan*  
Hsingjin Eugene Liu, *Taipei*  
Yasunobu Matsuda, *Niigata City*  
Chin-Hsiao Tseng, *Taipei*  
Yong Zeng, *Chengdu*

### GUEST EDITORIAL BOARD MEMBERS

Yi-Chen Chen, *Taichung*  
Tsung-Jung Lin, *Taipei*  
Yi-Wen Liu, *Chiayi*  
Jen-Leih Wu, *Taipei*  
Suh-Ching Yang, *Taipei*

### MEMBERS OF THE EDITORIAL BOARD



#### Argentina

Patricia Cristina Baré, *Buenos Aires*  
Maria Cristina Carrillo, *Rosario*  
Juan Carlos Perazzo, *Buenos Aires*  
Silvia Cristina Sookoian, *Buenos Aires*



#### Australia

Anthony S-Y Leong, *Newcastle*  
Donald Peter McManus, *Queensland*  
Des R Richardson, *New South Wales*  
Monica Robotin, *Sydney*  
Nathan Subramaniam, *Brisbane*  
Nicholas Shackel, *Sydney*  
Fiona J Warner, *New South Wales*



#### Austria

Wolfgang Mikulits, *Vienna*  
Lothar Bernd Zimmerhackl, *Innsbruck*



#### Bangladesh

Mamun Al Mahta, *Banani*



#### Belgium

Frederik C Berrevoet, *Gent*  
Olivier Detry, *Liège*  
Philip Meuleman, *Ghent*



#### Botswana

Francesca Cainelli, *Gaborone*  
Sandro Vento, *Gaborone*



#### Brazil

Niels OS Câmara, *Sao Paulo*  
Joel Faintuch, *Sao Paulo*

RCS Ferreira, *Santo Amaro*  
Regina CS Godenberg, *Rio de Janeiro*  
Cristina Miyazaki, *Rio Preto*  
CPMS Oliveira, *Sao Paulo*  
MAF Ribeiro JR, *Parnaíba*  
Mauricio Silva, *Rio Grande*



#### Brunei Darussalam

Vui Heng Chong, *Bandar Seri Begawan*



#### Bulgaria

Nikolai Vasilev Belev, *Plovdiv*



#### Canada

Vasu D Appanna, *Ontario*  
Elijah Dixon, *Alberta*  
Fernando Alvarez, *Quebec*  
Seyed Ali Gaskari, *Calgary*  
Serge Jothy, *Toronto*  
Jennifer Linchee Kuk, *Toronto*  
Qiang Liu, *Saskatchewan*  
Eberhard L Renner, *Toronto*  
Eldon A Shaffer, *Alberta*  
George Therapondos, *Ontario*



#### Chile

Luis A Videla, *Santiago*



#### China

Peng Bing, MD, *Chengdu*

Chiranjib Chakraborty, *Beijing*  
 Stephen Lam Chan, *Hong Kong*  
 George G Chen, *Hong Kong*  
 Min-Shan Chen, *Guangzhou*  
 Yang Cheng, *Shanghai*  
 Siu Tim Cheung, *Hong Kong*  
 Thomas YC Cheung, *Hong Kong*  
 Yick-Pang Ching, *Hong Kong*  
 William Chi-shing Cho, *Hong Kong*  
 Chui Chung-hin, *Hong Kong*  
 Shuang-Suo Dang, *Xi'an*  
 Yi-Tao Ding, *Nanjing*  
 Jian-Gao Fan, *Shanghai*  
 Yuen Man Fung, *Hong Kong*  
 Zuo-Jiong Gong, *Wuhan*  
 Tian-Quan Han, *Shanghai*  
 Jin-Yang He, *Guangzhou*  
 Garrett CL Ho, *Hong Kong*  
 Ji-Ming Hu, *Wuhan*  
 Can-Hua Huang, *Chengdu*  
 Zhi-Yong Huang, *Wuhan*  
 Jian-Hui Jiang, *Changsha*  
 Dong-Yan Jin, *Hong Kong*  
 Hsiang-Fu Kung, *Hong Kong*  
 Lai PBS Lai, *Hong Kong*  
 Wan YJ Lau, *Hong Kong*  
 Nancy WY Leung, *Hong Kong*  
 Jin-Qing Li, *Guangzhou*  
 Li-Ying Li, *Beijing*  
 Shu-Chen Li, *Harbin*  
 Xin-Wei Li, *Shanghai*  
 Yu-Yuan Li, *Guangzhou*  
 En-Qi Liu, *Xi'an*  
 Yin-Kun Liu, *Shanghai*  
 Chung-Mau Lo, *Hong Kong*  
 Lun-Gen Lu, *Shanghai*  
 Ming-De Lu, *Guangzhou*  
 John M Luk, *Hong Kong*  
 Guang-Hua Luo, *Changzhou*  
 Shuang Mei, *Shanghai*  
 Kelvin KC Ng, *Hong Kong*  
 Qin Ning, *Wuhan*  
 Qin Pan, *Shanghai*  
 Qi-Jun Qian, *Shanghai*  
 Jian-Min Qin, *Shanghai*  
 Xian-Jun Qu, *Jinan*  
 Xue-Ying Sun, *Harbin*  
 Qin Su, *Beijing*  
 Wu-Yi Sun, *Hefei*  
 Hui-Ru Tang, *Wuhan*  
 Peng Tao, *Nanning*  
 Eric WC Tse, *Hong Kong*  
 Bin Wang, *Weifang*  
 Xiao-Zhong Wang, *Fuzhou*  
 Xiu-Jie Wang, *Chengdu*  
 Zhen-Xia Wang, *Huhot*  
 Grace LH Wong, *Hong Kong*  
 Nathalie Wong, *München*  
 Xiong-Zhi Wu, *Tianjin*  
 De-Xiang Xu, *Hefei*  
 Rui-An Xu, *Quanzhou*  
 Xun-Di Xu, *Changsha*  
 Xiao Yang, *Beijing*  
 Zhen-Fan Yang, *Hong Kong*  
 Boon Hun Yong, *Hong Kong*  
 Ting-He Yu, *Chengdu*  
 Benny CY Zee, *Hong Kong*  
 Jia-Ning Zhang, *Dalian*  
 Xiao-Dong Zhang, *Tianjin*

Xiao-Lan Zhang, *Shijiazhuang*  
 Xiao-Yan Zhang, *Shanghai*  
 Hong-Chuan Zhao, *Hefei*  
 Xiao-Ping Zhao, *Beijing*  
 Jiang-Fan Zhu, *Shanghai*  
 Yi-Ping Zou, *Beijing*



**Denmark**

Henning Grønbaek, *Aarhus*



**Egypt**

Nabil Mohie Abdel-Hamid, *Minia*  
 Laila AF Eissa, *Mansoura*  
 Mona Mostafa Fahmy Nosseir, *Giza*



**Finland**

Thomas Kietzmann, *Oulu*



**France**

Aramando Abergel, *Clenmont -Ferrant*  
 Henri Bismuth, *Villejuif Cedex*  
 Ana CFN Cardoso, *Paris*  
 Nicolas Chignard, *Paris*  
 Claude C de Fromentel, *Lyon*  
 Zdenko Herceg, *Lyon*  
 Nathalie Janel, *Paris*  
 Victor de Ledinghen, *Pessac cedex*  
 Antoinette Lemoine, *Villejuif*  
 Marcellin Patrick, *Clichy*  
 Raoul Poupon, *Paris*  
 Rodrigue Rossignol, *Bordeaux cedex*  
 Christian Trépo, *Lyon*  
 Dominique A Vuitton, *Besancon*  
 Virginie Wautot, *Pierre Benite*



**Gambia**

Maimuna Ebirunkeh Mendy, *Banjul*



**Germany**

Thomas Bock, *Tuebingen*  
 Ali Canbay, *Essen*  
 Enrico Narciso De Toni, *München*  
 Joachim Drevs, *Freiburg*  
 Volker Fendrich, *Marburg*  
 Peter R Galle, *Mainz*  
 Erich Gulbins, *Essen*  
 Roland Kaufmann, *Jena*  
 Sebastian Hinz, *Kiel*  
 Philipp Kobbe, *Aachen*  
 Michael Kremer, *Heidelberg*  
 Christian Liedtke, *Aachen*  
 Martin Loss, *Regensburg*  
 Arun Kumar Mankan, *Munich*

Lars Müller, MD, *Kiel*  
 Michael D Menger, *Saarbrücken*  
 Andreas K Nussler, *Munich*  
 Margarete Odenthal, *Koeln*  
 Claus Petersen, *Hannover*  
 Andrej Potthoff, *Hannover*  
 Thomas Pusch, *München*  
 Elke Roeb, *Giessen*  
 Frank Tacke, *Aachen*  
 Stefan Rose-John, *Kiel*  
 Andreas Teufel, *Mainz*  
 Lothar Thomas, *Frankfurt*  
 Jens JW Tischendorf, *Aachen*  
 Arndt Vogel, *Hannover*



**Greece**

Alex P Betrosian, *Athens*  
 Spiros G Delis, *Athens*  
 Ioannis Diamantis, *Athens*  
 Papandreou Dimitrios, *Mela*  
 Elias A Kouroumalis, *Crete*  
 George Papatheodoridis, *Athens*  
 Stamatios E. Theocharis, *Athens*



**Hungary**

Gábor Bánhegyi, *Budapest*  
 Subhamay Ghosh, *Pécs*  
 Peter Nagy, *Budapest*



**India**

Anjali Deepak Amarapurkar, *Mumbai*  
 DN Amarapurkar, *Mumbai*  
 Runu Chakravarty, *Kolkata*  
 Pronobesh Chattopadhyay, *Moradabad*  
 Puneet Chopra, *Gurgaon Haryana*  
 Tanya Das, *Kolkata*  
 Radha Krishan Dhiman, *Chandigarh*  
 Ajay Duseja, *Chandigarh*  
 Devendra K Gupta, *New Delhi*  
 P Kar, *New Delhi*  
 Sudhir Kumar, *Lucknow*  
 Vijay Kumar, *New Delhi*  
 Anoop Misra, *New Delhi*  
 Devendra Parmar, *Lucknow*  
 Rajendra Prasad, *Chandigarh*  
 K Rajeshwari, *New Delhi*  
 Pallu Reddanna, *Hyderabad*  
 Barjesh Chander Sharma, *New Delhi*  
 Sarman Singh, *New Delhi*  
 Ajith TA, *Thrissur*



**Ireland**

Matthew William Lawless, *Dublin*



**Israel**

Yaron Ilan, *Jerusalem*

Yaakov Maor Kendler, *Tel Hashomer*  
 Ran Oren, MD, *Tel Aviv*  
 Amir Shlomai, *Modiin*  
 Rifaat Safadi, *Jerusalem*  
 Shira Zelber Sagi, *Tel Aviv*  
 Yehuda Julius Shoenfeld, *Tel HaShomer*



## Italy

Luca Aasaloni, *Bologna*  
 Giovanni Addolorato, *Rome*  
 Luigi E Adinolfi, *Naples*  
 Pietro Andreone, *Bologna*  
 M Appetecchia, *Rome*  
 Antonio Ascione, *Napoli*  
 Ferruccio Bonino, *Milano*  
 Bruno D Bruno, *Benevento*  
 Savino Bruno, *Milano*  
 Melchiorre Cervello, *Palermo*  
 Claudio Chiesa, *Rome*  
 Stefano Colagrande, *Firenze*  
 Massimo G Colombo, *Milan*  
 Samuele De Minicis, *Montegrano*  
 Alessandro Vitale, *alessandro*  
 Fabio Farinati, *Padova*  
 Paolo Feltracco, *Padova*  
 Domenico Ferri, *Bari*  
 Amalia Gastaldelli, *Pisa*  
 Domenico Girelli, *Verona*  
 Fernando Goglia, *Benevento*  
 Alessandro Grasso, *Savona*  
 Ignazio Grattagliano, *Bari*  
 Pietro Invernizzi, *Milan*  
 Francesco Izzo, *Naples*  
 Amedeo Lonardo, *Modena*  
 Malaguarnera Lucia, *Trecastagni*  
 Massimo Di Maio, *Rossano*  
 Melania Manco, *Rome*  
 Andrea Mancuso, *Palermo*  
 F Marotta, *Milano*  
 Fabio Marra, *Florence*  
 Roberto Mazzanti, *Florence*  
 Giulia Morsica, *Milan*  
 Antonio Moschetta, *Bari*  
 Massimo Negrini, *Ferrara*  
 Andrea Nicolini, *Pisa*  
 Giuseppe R Nigri, *Rome*  
 Valerio Nobili, *Rome*  
 Valentina Pallottini, *Rome*  
 Adriano M Pellicelli, *Rome*  
 Marcello Persico, *Naples*  
 Massimo Pinzani, *Firenze*  
 Giovanni Polimeni, *Messina*  
 Camillo Porta, *Pavia*  
 Piero Portincasa, *Bari*  
 Emilio Quaia, *Trieste*  
 Giuseppe Remuzzi, *Bergamo*  
 Domenico Ribatti, *Bari*  
 Massimo Roncalli, *Rozzano*  
 Carlo Sabbà, *Bari*  
 Orazio Schillaci, *Rome*  
 Gaetano Serviddio, *Foggia*  
 Aurelio Sonzogni, *Bergamo*  
 Paolo Sorrentino, *Salerno*  
 Enea Spada, *Roma*  
 Giovanni Tarantino, *Naples*  
 Luciano Tarantino, *Naples*  
 Claudio Tiribelli, *Trieste*

Pierluigi Toniutto, *Udine*  
 Pietro Vajro, *Naples*  
 Luca Vigano, *Torino*



## Japan

Yuichiro Eguchi, *Saga*  
 Munechika Enjoji, *Fukuoka*  
 Jiro Fujimoto, *Osaka*  
 Atsushi Hosui, *Osaka*  
 Kazuo Ikeda, *Nagoya*  
 Toru Ishikawa, *Niigata*  
 Yoshiaki Iwasaki, *Okayama*  
 Satoru Kakizaki, *Gunma*  
 Naoya Kato, *Tokyo*  
 Takumi Kawaguchi, *Kurume*  
 Kiminori Kimura, *Tokyo*  
 Tsuneo Kitamura, *Chiba*  
 Keiichi Kubota, *Tochigi*  
 Sabina Mahmood, *Okayama*  
 Hitoshi Maruyama, *Chiba*  
 Sachiko Matsushashi, *Saga*  
 Toshihiro Mitaka, *Sapporo*  
 Eiji Miyoshi, *Yamada-oka Suita*  
 Zenichi Morise, *Toyoake Aichi*  
 Ryuichi Morisihita, *Osaka*  
 Yoshiki Murakami, *Kyoto*  
 Satoru Murata, *Tokyo*  
 Atsushi Nakajima, *Kanagawa*  
 Yasuni Nakanuma, *Kanazawa*  
 Waka Ohishi, *Hiroshima*  
 Morikazu Onji, *Matsuyama*  
 Toshiji Saibara, *Nankoku*  
 Hiroaki Shiba, *Tokyo*  
 Ikuo Shoji, *Hyogo*  
 Ryo Sudo, *Yokohama*  
 Yoshio Sumida, *Nara*  
 Shinji Tanaka, *Tokyo*  
 Takuji Tanaka, *Gifu*  
 Akihiko Tsuchida, *Tokyo*  
 Takato Ueno, *Kurume*  
 Shinichi Ueno, *Kagoshima*  
 Kiyohito Yagi, *Osaka*  
 Yo-ichi Yamashita, *Hiroshima*  
 Teruyoshi Yanagita, *Saga*  
 Shuang-Qin Yi, *Kanazawa*  
 Hiroshi Yoshida, *Tokyo*  
 Hitoshi Yoshiji, *Nara*



## Malaysia

Kamsiah Jaarin, *Kuala Lumpur*



## Mexico

Norberto C Chavez-Tapia, *Tlalpan*  
 Javier Lizardi Cervera, *Tlalpan CP*  
 Saúl Villa-Treviño, *México DF*  
 Florencia V Vorackova, *México DF*



## Netherlands

Robert Jacobus de Knegt, *Rotterdam*

TU Hoogenraad, *Heidelberglaan*  
 Maarten E Tushuizen, *MB Amsterdam*  
 Robert C Verdonk, *RB Groningen*



## Pakistan

Syed Hamid Ali, *Karachi*  
 Huma IQ TI, *Islamabad*



## Poland

Maria ES Lotowska, *Bialystok*



## Portugal

Felix Dias Carvalho, *Porto*



## Philippines

Janus P Ong, *Manila*



## Romania

Eugen Georgescu, *Craiova*



## Saudi Arabia

Ahmed Helmy, *Riyadh*



## Singapore

Wei Ning Chen, *Singapore*  
 Si-Shen Feng, *Singapore*  
 Lang Zhuo, *Singapore*  
 Chun-Tao Wai, *Singapore*



## South Korea

Sang Hoon Ahn, *Seoul*  
 Sun Pyo Hong, *Yongin*  
 Byung Ihn Choi, *Seoul*  
 Seok Joo Han, *Seoul*  
 Kyung Lib Jang, *Busan*  
 Bum-Joon Kim, *Seoul*  
 Dong Goo Kim, *Seoul*  
 Kyung Sik Kim, *Seoul*  
 Meehyein Kim, *Yongin*  
 Young Chul Kim, *Seoul*  
 Mi-Kyung Lee, *Jeonnam*  
 Young-Ik Lee, *Taejon*  
 Kwan-Kyu Park, *Daegu*  
 Hyunchul Rhim, *Seoul*  
 In Kyoung Lim, *Gyeonggi-do*  
 Dae-Yeul Yu, *Daejeon*  
 Jong Won Yun, *Kyungbuk*



### Spain

Jose AG Agundez, *Badajoz*  
 Maria Angeles, *Madrid*  
 Agustin Castiella, *Mendaro*  
 Ruben Ciria, *Cordoba*  
 Joan Clari, *Barcelona*  
 Maria Buti Ferret, *Barcelona*  
 Puri Fortes, *Pamplona*  
 Joan Genescà, *Barcelona*  
 María J Gómez-Lechón, *Valencia*  
 Arias Jaime, *Madrid*  
 Ángeles Pajares María, *Madrid*  
 Jordi Muntane, *Cordoba*  
 Jose JG Marin, *Salamanca*  
 Julia P Onsurbe, *Barcelona*  
 Albert Parés, *Barcelona*  
 Sonia Ramos, *Madrid*  
 Cristina Ripoll, *Madrid*  
 Isabel F Romero, *Barcelona*  
 Marta R Romero, *Salamanca*  
 Juan Macias Sanchez, *Sevilla*  
 Juan Sastre, *Valencia*  
 Manuel Vázquez-Carrera, *Barcelona*



### Sri Lanka

EGD Shaman Rajindrajith, *Ragama*



### Sudan

Hatim MY Mudawi, *Khartoum*



### Switzerland

Beat Mullhaupt, *Zurich*  
 Maurer A Christoph, *Liestal*



### Thailand

Nattiya Hirankarn, *Bangkok*  
 Somchai Pinlaor, *Khon Kaen*  
 Yong Poovorawan, *Bangkok*  
 Abhasnee Sobhonslidsuk, *Bangkok*  
 Chanitra Thuwajit, *Bangkok*  
 Sopit Wongkham, *Khon Kaen*



### Tunisia

Olfa Bahri, *Tunis-Belvedere*  
 Chadli Dziri, *Tunis*



### Turkey

Inci Alican, *Istanbul*  
 Ahmet Atessahin, *Elazig*  
 Yasemin Hatice Balaban, *Ankara*

Hayrullah Derici, MD, *Izmir*  
 Cigdem Ulukaya Durakbasa, *Istanbul*  
 Muhsin MM Harputluoglu, *Malatya*  
 Abdurrahman Kadayifci, *Gaziantep*  
 Adnan Kadayifci, *Antalya*  
 Ali Sazci, *Kocaeli*  
 Ilker Tasci, *Ankara*  
 Mehmet Yalniz, *Elazig*  
 Serkan Yener, *Izmir*  
 Yusuf Yilmaz, *Istanbul*



### United Kingdom

Alastair David Burt, *Newcastle*  
 David O Cosgrove, *London*  
 Anil Dhawan, *London*  
 Indra Neil Guha, *Nottingham*  
 Phillip M Harrison, *London*  
 Hübscher SG Hübscher, *Birmingham*  
 Long R Jiao, *London*  
 AT Koulaouzidis, *Edinburgh*  
 Patricia Lalor, *Birmingham*  
 David A Lomas, *Cambridge*  
 Rajeshwar P Mookerjee, *London*  
 Gareth J Morris-Stiff, *Wales*  
 Kathryn L Nash, *Southampton*  
 Derek Anthony O'Reilly,  
 Christian P Selinge, *Bolton*  
 Konstantinos Tziomalos, *London*  
 Feng Wu, *Oxford*



### United States

Gary A Abrams, *Montgomery*  
 Hassan H A-Kader, *Tucson*  
 Hans-Olov Adami, *Massachusetts*  
 Joseph Ahn, *Maywood*  
 Shannon Marie Bailey, *Alabama*  
 Numan Cem Balci, *St Louis MO*  
 Edmund J Bini, *New York*  
 Victor E Buckwold, *Frederick*  
 Roniel Cabrera, *Gainesville*  
 Guoqing Cao, *Indiana*  
 Disaya Chavalitdhamrong, *New York*  
 Chien-Shing Chen, *Loma Linda*  
 Fei Chen, *Morgantown*  
 Su Chen, *San Antonio*  
 Youhai H Chen, *Philadelphia*  
 Anne M Covey, *New York*  
 Mark J Czaja, *New York*  
 Srikanta Dash, *New Orleans*  
 Anthony JB Demetris, *Pittsburgh*  
 Sridevi Devaraj, *California*  
 Lisa Ross Dixon, *Gainesville*  
 Terrence M Donohue, *Omaha*  
 Q Ping Dou, *Detroit*  
 Murray N Ehrinpreis, *Detroit*  
 Marwan Ghazi Fakih, *Buffalo*  
 Shengyun Fang, *Maryland*  
 Claus J Fimmel, *Illinois*  
 Robert Anthony Fisher, *Virginia*  
 Samuel W French, *Torrance*  
 Phillip A Furman, *Princeton*  
 M Eric Gershwin, *California*  
 Jalal K Ghali, *Michigan*  
 Grace Liejun Guo, *Kansas City*  
 Dieter Haemmerich, *Charleston*  
 Young S Hahn, *Charlottesville*  
 Stephen A Harrison, *Texas*  
 Dee Harrison-Findik, *Nebraska*  
 Sidhartha Hazari, *Louisiana*  
 Thomas S Helling, *Jackson*  
 Alan W Hemming, *Florida*  
 Iryna S Hepburn, *Evans*  
 Ai-Xuan L Holterman, *Chicago*  
 Ke-Qin Hu, *California*  
 Guancun Huang, *Ohio*  
 Wendong Huang, *California*  
 Rachel M Hudacko, *New Brunswick*  
 Michael John Jacobs, *Michigan*  
 Hartmut W Jaeschke, *Kansas City*  
 Ravi Jhaveri, *North Carolina*  
 Lynt B Johnson, *Washington*  
 Neil Louis Julie, *Bethesda*  
 Sanjay Kakar, *San Francisco*  
 Sanjeeva P Kalva, *Boston*  
 Jing X Kang, *Massachusetts*  
 Hetal Karsan, *Georgia*  
 Emmet B Keefe, *California*  
 Nancy Ellen Kemeny, *New York*  
 Andrew Scott Kennedy, *Cary*  
 Kusum K Kharbanda, *Omaha*  
 David H Kirn, *California*  
 Hyam Lerner Leffert, *La Jolla*  
 Stacey Marie Lerret, *Milwaukee*  
 Fengzhi Li, *New York*  
 Wei Li, *Houston*  
 Shuang Liu, *Indiana*  
 Su Hao Lo, *Davis*  
 Daniel G Maluf, *Richmond*  
 Jose E Manautou, *Storrs*  
 Richard S Mangus, *Indiana*  
 Mary Ko Manibusan, *Virginia*  
 Paul Martin, *Miami*  
 Jochen Mattner, *Ohio*  
 James A McCubrey, *North Carolina*  
 Valentina Medici, *Sacramento*  
 George Michalopoulos, *Pittsburgh*  
 Smruti R Mohanty, *Illinois*  
 John T Moore, *GlaxoSmithKline*  
 Ravi Murthy, *Texas*  
 Laura E Nagy, *Cleveland*  
 Sagar U Nigwekar, *Rochester*  
 Eileen M O'Reilly, *New York*  
 Kevin FS O'Carroll, *Hershey*  
 Melissa Kay Osborn, *Atlanta*  
 Helieh Saatara Oz, *Kentucky*  
 Igor P Pogribny, *Arkansas*  
 Nicholas C Popescu, *Bethesda Maryland*  
 Daniel S Pratt, *Boston*  
 Ratna B Ray, *Louis*  
 Nancy Reau, *Chicago*  
 Janardan K Reddy, *Chicago*  
 Martin J Ronis, *Little Rock*  
 Phillip Ruiz, *Florida*  
 Tanios B Saab, *Columbus*  
 Adnan Said, *Madison*  
 Neeraj Saxena, *Georgia*  
 Raymund R Saxena, *Minnesota*  
 Ann Scheimann, *Baltimore*  
 Timothy M Schmitt, *Charlottesville*  
 Bernd Schnabl, *La Jolla*  
 Kunwar Shailubhai, *Pennsylvania*  
 Muhammad Y Sheikh, *California*  
 Perry Shen, *Winston-Salem*  
 Viji Shridhar, *Rochester*  
 Shivendra D Shukla, *Missouri*  
 Ashwani K Singal, *Galveston*  
 Keshav K Singh, *New York*



Omar Skalli, *Shreveport*  
 Byoung-Joon Song, *Maryland*  
 Branko Stefanovic, *Tallahassee*  
 Stephen Strom, *Pennsylvania*  
 Xiao Su, *San Francisco*  
 Wing-Kin Syn, *North Carolina*  
 Gyongyi Szabo, *Massachusetts*  
 Shinako Takada, *Houston*  
 Yueming Tang, *Chicago*  
 John M Taylor, *Philadelphia*  
 Swee H The, *Springfield*  
 Chung-Jyi Tsai, *Lexington*  
 George P Tuszyński, *Pennsylvania*  
 Jean-Nicolas Vauthey, *Houston*

Michael E de Vera, *Pennsylvania*  
 Yu-Jui Yvonne Wan, *Kansas*  
 Jack R Wands, *Providence*  
 Hanlin L Wang, *Los Angeles*  
 Xin Wei Wang, *Maryland*  
 Wahid Wassef, *Worcester*  
 Ronald J Wong, *California*  
 George YH Wu, *Farmington*  
 Hai-Shan Wu, *New York*  
 Victor W Xia, *California*  
 Ximing J Yang, *Chicago*  
 Matthew M Yeh, *Seattle*  
 Mei Po Yip, *Seattle*  
 Min You, *Tampa*  
 Zobair M Younossi, *Falls Church*

Xiao-Fang Yu, *Maryland*  
 Yong Yuan, *Plainsboro*  
 Jian X Zhang, *Charlotte*  
 Jian-Ying Zhang, *El Paso*  
 Kezhong Zhang, *Michigan*  
 Yu-Jing Zhang, *New York*  
 Yuao Zhu, *Durham*  
 Saša Živković, *Pittsburgh*  
 William A Zule, *Research Triangle Park*



**Venezuela**

Flor Pujol de Freychet, *Caracas*

**ORIGINAL ARTICLE**

- 274** Bone marrow progenitor cells do not contribute to liver fibrogenic cells  
*Paredes BD, Faccioli LAP, Quintanilha LF, Asensi KD, Zaverucha-do-Valle C, Canary PC, Takiya CM, Campos-de-Carvalho AC, Goldenberg RCS*

**CASE REPORT**

- 284** Hepatic osteodystrophy complicated with bone fracture in early infants with biliary atresia  
*Okada T, Honda S, Miyagi H, Minato M, Taketomi A*
- 288** Peritoneal bleeding due to percutaneous transhepatic gallbladder drainage: An autopsy report  
*Ihama Y, Fukazawa M, Ninomiya K, Nagai T, Fuke C, Miyazaki T*

## Contents

*World Journal of Hepatology*  
Volume 4 Number 10 October 27, 2012

**ACKNOWLEDGMENTS** I Acknowledgments to reviewers of *World Journal of Hepatology*

**APPENDIX** I Meetings  
I-V Instructions to authors

**ABOUT COVER** Okada T, Honda S, Miyagi H, Minato M, Taketomi A.  
Hepatic osteodystrophy complicated with bone fracture in early infants with biliary atresia.  
*World J Hepatol* 2012; 4(10): 284-287  
<http://www.wjgnet.com/1948-5182/full/v4/i10/284.htm>

**AIM AND SCOPE** *World Journal of Hepatology* (*World J Hepatol*, *WJH*, online ISSN 1948-5182, DOI: 10.4254), is a monthly, open-access, peer-reviewed journal supported by an editorial board of 573 experts in hepatology from 46 countries.  
The major task of *WJH* is to report rapidly the most recent results in basic and clinical research on hepatology, including: liver biology/pathology, cirrhosis and its complications, liver fibrosis, liver failure, portal hypertension, hepatitis B and C and inflammatory disorders, steatohepatitis and metabolic liver disease, hepatocellular carcinoma, biliary tract disease, autoimmune disease, cholestatic and biliary disease, transplantation, genetics, epidemiology, microbiology, molecular and cell biology, nutrition, geriatric and pediatric hepatology, diagnosis and screening, endoscopy, imaging, and advanced technology.

**FLYLEAF** I-V Editorial Board

## EDITORS FOR THIS ISSUE

Responsible Assistant Editor: *Shuai Ma*  
Responsible Electronic Editor: *Jin-Li Yan*  
Proofing Editor-in-Chief: *Lian-Sheng Ma*

Responsible Science Editor: *Xin-Zhen Huang*  
Proofing Editorial Office Director: *Jin-Li Wang*

**NAME OF JOURNAL**  
*World Journal of Hepatology*

**ISSN**  
ISSN 1948-5182 (online)

**LAUNCH DATE**  
October 31, 2009

**FREQUENCY**  
Monthly

**EDITING**  
Editorial Board of *World Journal of Hepatology*  
Room 903, Building D, Ocean International Center,  
No. 62 Dongsihuan Zhonglu, Chaoyang District,  
Beijing 100025, China  
Telephone: +86-10-85381892  
Fax: +86-10-85381893  
E-mail: [wjh@wjgnet.com](mailto:wjh@wjgnet.com)  
<http://www.wjgnet.com>

**EDITOR-IN-CHIEF**  
**Masatoshi Kudo, MD, PhD, Professor**, Department  
of Gastroenterology and Hepatology, Kinki University

School of Medicine, 377-2, Ohno-Higashi, Osaka-Sayama,  
589-8511, Osaka, Japan

**EDITORIAL OFFICE**  
Jian-Xia Cheng, Director  
Jin-Lei Wang, Vice Director  
*World Journal of Hepatology*  
Room 903, Building D, Ocean International Center,  
No. 62 Dongsihuan Zhonglu, Chaoyang District,  
Beijing 100025, China  
Telephone: +86-10-85381892  
Fax: +86-10-85381893  
E-mail: [wjh@wjgnet.com](mailto:wjh@wjgnet.com)  
<http://www.wjgnet.com>

**PUBLISHER**  
Baishideng Publishing Group Co., Limited  
Room 1701, 17/F, Henan Building,  
No.90 Jaffe Road, Wanchai,  
Hong Kong, China  
Fax: +852-31158812  
Telephone: +852-58042046  
E-mail: [bpg@baishideng.com](mailto:bpg@baishideng.com)  
<http://www.wjgnet.com>

**PUBLICATION DATE**  
October 27, 2012

**COPYRIGHT**  
© 2012 Baishideng. Articles published by this Open-Access journal are distributed under the terms of the Creative Commons Attribution Non-commercial License, which permits use, distribution, and reproduction in any medium, provided the original work is properly cited, the use is non-commercial and is otherwise in compliance with the license.

**SPECIAL STATEMENT**  
All articles published in this journal represent the viewpoints of the authors except where indicated otherwise.

**INSTRUCTIONS TO AUTHORS**  
Full instructions are available online at [http://www.wjgnet.com/1948-5182/g\\_info\\_20100316080002.htm](http://www.wjgnet.com/1948-5182/g_info_20100316080002.htm)

**ONLINE SUBMISSION**  
<http://www.wjgnet.com/esps/>



## Bone marrow progenitor cells do not contribute to liver fibrogenic cells

Bruno Diaz Paredes, Lanuza Alaby Pinheiro Faccioli, Luiz Fernando Quintanilha, Karina Dutra Asensi, Camila Zaverucha do Valle, Paulo César Canary, Christina Maeda Takiya, Antonio Carlos Campos de Carvalho, Regina Coeli dos Santos Goldenberg

Bruno Diaz Paredes, Lanuza Alaby Pinheiro Faccioli, Luiz Fernando Quintanilha, Karina Dutra Asensi, Camila Zaverucha do Valle, Christina Maeda Takiya, Antonio Carlos Campos de Carvalho, Regina Coeli dos Santos Goldenberg, Carlos Chagas Filho Biophysics Institute, Rio de Janeiro 21941-902, Brazil

Paulo César Canary, Radiology Department, Clementino Fraga Filho University Hospital, Rio de Janeiro 22909-538, Brazil

**Author contributions:** Paredes BD and Faccioli LAP contributed equally to this work and participated in the experimental design, performed flow cytometry, fluorescence assays, and analyzed the data; Quintanilha LF performed mouse liver injury and data analysis; Asensi KD performed bone marrow transplantation and data analysis; Zaverucha-do-Valle C performed confocal microscopy and data analysis; Canary PC performed mouse whole-body irradiation and data analysis; Takiya CM performed histology and data analysis; Campos-de-Carvalho AC participated in the experimental design and statistical analysis; Goldenberg RCS designed and supervised the study, execution, analysis and approved the final version; and all authors participated in manuscript preparation.

Supported by Brazilian Council for Scientific and Technological Development; Coordination for the Improvement of Higher Education Personnel; Rio de Janeiro State Research Supporting Foundation and Ministry of Health

Correspondence to: Regina Coeli dos Santos Goldenberg, PhD, Carlos Chagas Filho Biophysics Institute, Carlos Chagas Filho Avenue, 373, Health Sciences Center, Corridor G, 2nd floor/room 53-University City, Rio de Janeiro 21941-902, Brazil. [rcoeli@biof.ufrj.br](mailto:rcoeli@biof.ufrj.br)

Telephone: +55-21-25626559 Fax: +55-21-25626559

Received: December 6, 2011 Revised: October 24, 2012

Accepted: October 26, 2012

Published online: October 27, 2012

### Abstract

**AIM:** To investigate the contribution of bone marrow (BM) cells to hepatic fibrosis.

**METHODS:** To establish a model of chimerism, C57Bl/6 female mice were subjected to full-body irradiation (7 Gy) resulting in BM myeloablation. BM mononuclear cells obtained from male transgenic mice expressing enhanced green fluorescent protein (GFP) were used for reconstitution. Engraftment was confirmed by flow cytometry. To induce liver injury, chimeric animals received carbon tetrachloride (CCl<sub>4</sub>) 0.5 mL/kg intraperitoneally twice a week for 30 d (CCl<sub>4</sub> 30 d) and age-matched controls received saline (Saline 30 d). At the end of this period, animals were sacrificed for post mortem analysis. Liver samples were stained with hematoxylin and eosin to observe liver architectural changes and with Sirius red for collagen quantification by morphometric analysis.  $\alpha$ -smooth muscle actin ( $\alpha$ -SMA) was analyzed by confocal microscopy to identify GFP+ cells with myofibroblast (MF) characteristics. Liver tissue, BM and peripheral blood were collected and prepared for flow cytometric analysis using specific markers for detection of hepatic stellate cells (HSCs) and precursors from the BM.

**RESULTS:** Injury to the liver induced changes in the hepatic parenchymal architecture, as reflected by the presence of inflammatory infiltrate and an increase in collagen deposition (Saline 30 d = 11.10%  $\pm$  1.12% vs CCl<sub>4</sub> 30 d = 12.60%  $\pm$  0.73%,  $P$  = 0.0329). Confocal microscopy revealed increased reactivity against  $\alpha$ -SMA in CCl<sub>4</sub> 30 d compared to Saline 30 d, but there was no co-localization with GFP+ cells, suggesting that cells from BM do not differentiate to MFs. Liver flow cytometric analysis showed a significant increase of CD45+/GFP+ cells in liver tissue (Saline 30 d = 3.2%  $\pm$  2.2% vs CCl<sub>4</sub> 30 d = 5.8%  $\pm$  1.3%,  $P$  = 0.0458), suggesting that this increase was due to inflammatory cell infiltration (neutrophils and monocytes). There was also a significant increase of common myeloid progenitor cells (CD117+/CD45+) in the livers of CCl<sub>4</sub>-treated animals

(Saline 30 d = 2.16%  $\pm$  1.80% *vs* CCl<sub>4</sub> 30 d = 5.60%  $\pm$  1.30%,  $P = 0.0142$ ). In addition the GFP-/CD38+/CD45- subpopulation was significantly increased in the CCl<sub>4</sub> 30 d group compared to the Saline 30 d group (17.5%  $\pm$  3.9% *vs* 9.3%  $\pm$  2.4%,  $P = 0.004$ ), indicating that the increase in the activated HSC subpopulation was not of BM origin.

**CONCLUSION:** BM progenitor cells do not contribute to fibrosis, but there is a high recruitment of inflammatory cells that stimulates HSCs and MFs of liver origin.

© 2012 Baishideng. All rights reserved.

**Key words:** Bone marrow; Liver; Fibrosis; Progenitor cells; Chimeric mice; Green fluorescent protein+ cells

**Peer reviewers:** Guancun Huang, MD, PhD, Center for Clinical and Translational Research, the Research Institute at Nationwide Children's Hospital, Columbus, OH 43205, United States; Waka Ohishi, Department of Clinical Studies, Radiation Effects Research Foundation, Hiroshima 732-0815, Japan

Paredes BD, Faccioli LAP, Quintanilha LF, Asensi KD, Zaverucha-do-Valle C, Canary PC, Takiya CM, Campos-de-Carvalho AC, Goldenberg RCS. Bone marrow progenitor cells do not contribute to liver fibrogenic cells. *World J Hepatol* 2012; 4(10): 274-283 Available from: URL: <http://www.wjgnet.com/1948-5182/full/v4/i10/274.htm> DOI: <http://dx.doi.org/10.4254/wjh.v4.i10.274>

## INTRODUCTION

In recent years, cell transplantation has emerged as a potential therapy to improve impaired liver function. In particular, bone marrow-derived stem cells (BMSCs) have been widely used in pre-clinical and clinical trials<sup>[1]</sup>.

Interest in this particular cell type was kindled by the discovery of donor-derived cells in the livers of bone marrow (BM) transplant recipients<sup>[2]</sup>. This indicated a potential relationship between BM and the regenerating liver. However, results published so far show no consensus as to the role of BMSCs in liver repair, and the issue remains one of the most controversial in regenerative medicine.

Several studies using different experimental models of hepatic diseases have demonstrated functional recovery of the liver after cell therapy<sup>[3-6]</sup>. On the other hand, our group, in agreement with the results of several other studies<sup>[7-9]</sup>, did not observe any benefits of using the bone marrow mononuclear cell fraction from normal<sup>[10]</sup> or cirrhotic rats<sup>[11]</sup> or BM-derived stromal cells<sup>[12]</sup> in a severe chronic hepatic injury model in rats.

Hepatic fibrosis and cirrhosis are the main causes of organ failure in chronic liver diseases of any etiology<sup>[13]</sup>. Persistent parenchymal cell injury leads to dysregulation of the normal processes of wound healing and to extensive deposition of extracellular matrix proteins<sup>[14]</sup>, a dynamic process known as fibrogenesis. This pathol-

ogy involves various cellular and molecular mechanisms, in which the myofibroblast (MF) and hepatic stellate cell (HSC) subpopulations play a major role when they become activated<sup>[15]</sup>.

During fibrogenesis, activated HSCs, located mainly in the perisinusoidal space, go through a transdifferentiation process, changing to a MF-like morphology at the portal spaces<sup>[16]</sup>. MFs present at these sites display high rates of proliferation, excessive production of collagen fibers and decreased production of matrix metalloproteinases, causing an imbalance in matrix degradation and preventing the resolution of fibrosis<sup>[17]</sup>. Both the MF and activated HSC subpopulations express  $\alpha$ -smooth muscle actin ( $\alpha$ -SMA), a known marker of pro-fibrotic cells<sup>[18]</sup>.

BMSCs may also play a role in generating liver fibrosis. Many authors reported that fibrocytes<sup>[19]</sup>, a BM-derived CD45+/CD34+/procollagen type 1+ subpopulation, can contribute to fibrosis in different models such as chronic cystitis<sup>[20]</sup>, ischemic cardiomyopathy<sup>[21]</sup> and asthma<sup>[22]</sup>. In addition, in a rat biliary duct ligation liver injury model, BM-derived fibrocytes [expressing collagen  $\alpha 1(I)$  promoter-green fluorescent protein (GFP)] were reported to comprise 5% of all collagen-producing cells<sup>[23]</sup>, an impressive percentage considering the low frequency of this cell type under normal conditions (0.1%-1.0% in humans)<sup>[24]</sup>.

In this scenario, where the use BM-derived cell therapies in liver disease is still controversial, it is important to investigate whether BM-derived cells can in fact contribute to liver fibrosis.

## MATERIALS AND METHODS

### Animals

All procedures were performed in accordance with the standards of the Guide for Care and Use of Laboratory Animals (DHHS Publication No. NIH 85-23, revised 1996, Office of Science and Health Reports, Bethesda, MD 20892). Female C57/BL6 mice and male mice transgenic for GFP- line C57/BL6-Tg (CAG-EGFP) C14-Y01-FM1310 (GFP+ mice), donated by Okabe *et al.*<sup>[25]</sup>, were obtained from the Carlos Chagas Filho Institute of Biophysics animal facility. Animals were housed at a controlled temperature (23 °C) and 12-h light-dark cycle.

### Experimental model: Total body irradiation and cell transplants

Female mice 6-8 wk of age were exposed to whole-body radiation (7 Gy) in a linear accelerator (Varian-Clinac 2100 CD) used for radiotherapy. BM cells were harvested from the femurs and tibiae of 8- to 12-wk-old male mice expressing enhanced GFP. Bones were inserted into adapted centrifuge tubes and centrifuged for 3 min at 1500  $\times g$  to collect the marrow. The contents were resuspended in Dulbecco's Modified Eagle's Medium (DMEM-Invitrogen) and layered on Histopaque 1083 (Sigma). The tubes were centrifuged at 400  $\times g$  for 30 min and the band corresponding to mononuclear cells

**Table 1** Antibody panel for flow cytometric analysis of specific cells

| Tubes   | Cell number         | Antibodies                   | Dil. | Target cells (tissue)  |
|---------|---------------------|------------------------------|------|--|
| Control | 1 × 10 <sup>5</sup> | No antibodies                | -    | -  |
| 1       | 1 × 10 <sup>6</sup> | CD45-PE-Cy7 (BD Biosciences) | 1:25 | Hepatic stellate cells (liver)   |
|         |                     | CD38-PE-Cy5 (eBioscience)    | 1:10 |  |
| 2       | 1 × 10 <sup>6</sup> | CD45-PE-Cy7 (BD Biosciences) | 1:25 | Hematopoietic stem cells, fibrocytes and monocytes (BM, PB and liver)                    |
|         |                     | CD14-APC (eBioscience)       | 1:10 |  |
|         |                     | CD34-PE (eBioscience)        | 1:10 |  |
| 3       | 1 × 10 <sup>6</sup> | CD45-PE-Cy7 (BD Biosciences) | 1:25 | Hematopoietic stem cells, fibrocytes and endothelial progenitor Cells (BM, PB and liver) |
|         |                     | CD133-APC (eBioscience)      | 1:10 |  |
|         |                     | CD34-PE (eBioscience)        | 1:10 |  |
| 4       | 1 × 10 <sup>6</sup> | CD45-PE-Cy7 (BD Biosciences) | 1:25 | Common progenitor cells (BM)   |
|         |                     | CD117-APC (eBioscience)      | 1:10 |  |
|         |                     | CD34-PE (eBioscience)        | 1:10 |  |

BM: Bone marrow; PB: Peripheral blood.

was collected. The cells were then washed and counted and their viability determined by Trypan blue exclusion. The mononuclear cells were resuspended in sterile saline (NaCl 0.9%) and injected through the orbital plexus in the female wild-type (WT) previously irradiated mice.

### Experimental groups

Infused animals were maintained under observation for 21 d after transplantation. Then, peripheral blood (PB) samples were collected to verify transplant efficiency by flow cytometric analysis of GFP+ cells. Animals showing percentages above 80% GFP+ cells were considered useful chimeric mice. PB samples of WT C57/BL6 and GFP+ mice were used as negative and positive controls, respectively. Selected chimeric mice ( $n = 10$ ) were divided into two groups: CCl<sub>4</sub> 30 d ( $n = 5$ ), which received injections of carbon tetrachloride (CCl<sub>4</sub>; dose of 0.5 mL/kg) twice a week for 30 d, and Saline 30 d ( $n = 5$ ) (experimental control), which received injections of saline solution during the same period.

### Histology

Liver tissue slices were fixed for 5 h in Gendre's solution, then overnight in 10% buffered formalin solution (pH 7.2) and embedded in paraffin. Liver samples were sectioned (5  $\mu$ m) and stained with hematoxylin-eosin (HE) and Sirius red. According to standard protocols, histomorphometry was performed using an imaging system consisting of a Q-Color 5 digital camera (Olympus, Japan) coupled to an epifluorescence Axiovert 100 microscope (Carl Zeiss, Thornwood, NY, United States). Randomly picked fields of Sirius red sections were captured from each animal, using a 20 × objective lens. Quantification was estimated by the percentage of stained area in comparison to the total area of the fields examined, using Image-Pro Plus 5.0 (Media Cybernetics, Bethesda, MD, United States) image analysis software.

### Peripheral blood samples for flow cytometry analysis

First, 50  $\mu$ L of PB samples from tail veins of irradiated animals were collected at day 21 to evaluate GFP+

BM engraftment efficiency. WT and GFP+ PB samples were used as negative and positive controls, respectively. Erythrocyte lysis-fixation solution (BD FACS Lysing Solution, Becton Dickinson) was added to the samples as recommended by the manufacturer and incubated for 15 min at room temperature. After this period, samples were washed with phosphate-buffered saline (PBS) and centrifuged at 300 ×  $g$  for 3 min and resuspended in 300  $\mu$ L of PBS for data acquisition by flow cytometry (BD FACS Aria, Becton Dickinson).

After the injury induction protocol, 0.3 mL of blood was drawn from the tail veins of animals from the experimental and control groups. Samples and antibodies were prepared as described in Table 1 and incubated 20 min in the dark at 4 °C.

### Digested liver tissue for flow cytometry analysis

The left hepatic lobe was carefully harvested and mechanically and enzymatically digested with type II collagenase (Worthington) solution 0.2% at 37 °C. After centrifugation at 250 ×  $g$ , the pellet was suspended in 1 mL PBS-bovine serum albumin (BSA) 1% solution and filtered through 30  $\mu$ m nylon filters (Filcons, Consults). The liver cells obtained were then resuspended in 300  $\mu$ L PBS-BSA 1% and incubated in the dark for 20 min at 4 °C with anti CD45-PE-Cy7 (BD Biosciences, San Jose, CA), anti CD38-PE-Cy5, anti CD34-PE, anti CD133-APC (all from eBioscience, San Diego, CA) for analysis by flow cytometry. After antibody incubation, stained liver cells were washed twice with PBS by centrifugation at 300 ×  $g$  and 300  $\mu$ L of PBS was added to prepare the cell suspension. All assays were conducted using concentrations of antibodies recommended by the manufacturers.

All data were obtained using a BD FACS Aria II flow cytometer (BD Biosciences) and BD FACSDiva acquisition software (version 6). The exported FCS 3.0 data file was analyzed using FlowJo version 7.6.4.

### Direct fluorescence

Liver samples were embedded in Optimal Cutting Tem-

perature (OCT) compound (Tissue-Tek., Sakura, Japan) and preserved at -70 °C. Sections (6 µm) were obtained using a cryostat (Leica CM1850, Leica) at -20 °C and fixed in acetone at 4 °C. Sections were incubated for 5 min in 5 µL of 4, 6-diamino-2-phenylindole (1 mg/mL) and 5 µL of an antifading medium (VectaShield, Vector Laboratories).

Fluorescence was observed on a Zeiss LSM 510 Meta confocal microscope (Carl Zeiss, Thornwood, NY, United States). The specificity of the immunofluorescent staining was assessed for each experimental condition by performing the reaction in the absence of primary antibodies. No staining was observed under such conditions.

### Immunofluorescence

Liver tissue was embedded in OCT (Tissue-Tek., Sakura, Japan) and preserved at -70 °C. Sections (6 µm) were obtained using a cryostat (Leica CM 1850, Leica) at -20 °C and fixed in acetone at 4 °C. Subsequently, sections were incubated in blocking solution (5% normal goat serum, 5% BSA in PBS, 0.1% Triton X-100, 0.05% Tween 20, 0.01% gelatin, all from Sigma Chemical Co.) for 1 h. Endogenous biotin was inhibited by using streptavidin and biotin solutions from a Dako blocking kit (Dako) according to the manufacturer's instructions. Indirect immunofluorescence technique was used to detect activated HSCs and MFs, using a primary monoclonal anti- $\alpha$ -SMA antibody (Dako, dilution of 1:40) biotinylated with the Animal Research Kit. Sections were incubated overnight at 4 °C and then washed twice in PBS-Tween 0.25% and then, the sections were incubated for 1.5 h with a streptavidin-Alexa 586 (Molecular Probes, Eugene, OR, United States) and the dye TO-PRO 3, at 1 mmol/L in DMSO (Invitrogen). After two washes in PBS-Tween 0.25% for 10 min, sections were mounted with Vectashield. Anti-mouse IgG was used as an isotype control. Serial plane images of 1.0 mm thick sections were obtained using a Zeiss LSM 510 Meta laser scanning confocal microscope (Carl Zeiss, Thornwood, NY, United States).

### Statistical analysis

Data were analyzed using analysis of variance (ANOVA) with Dunnett's post-test for multiple comparisons and the *t* test when comparing two groups. *P* < 0.05 was considered statistically significant. The data are presented as mean  $\pm$  SD (for Dunnett) and median and 25%-75% percentile (for Mann-Whitney post-test). GraphPad Prism 5 software was used.

## RESULTS

### Abnormal histological findings are only present in livers of irradiated and CCl<sub>4</sub>-intoxicated animals

Initially, HE and Sirius Red staining were performed to evaluate whether the radiation procedure used for BM ablation could induce hepatic lesions. Pre-experimental observations showed that livers from irradiated animals presented no histological changes, displaying regular he-

patic architecture and no septa formation, as observed in non-irradiated WT. The same characteristics were observed in animals from the Saline 30 d group (Figure 1A and C).

After 30 d of intoxication, livers from the CCl<sub>4</sub> 30 d group showed inflammatory infiltration in regions of the centrilobular and portal veins (Figure 1B), indicating hepatocellular damage. Also, the CCl<sub>4</sub> 30 d group showed formation of initial thin septae originating from regions around the centrilobular veins (Figure 1D), indicating deposits of collagen replacing parenchymal cells (fibrosis). Morphometric analysis indicated a significant increase (*P* = 0.0329) in collagen content in CCl<sub>4</sub> 30 d group animals compared to Saline 30 d group animals (Figure 2).

### Analysis of GFP+ cells derived from bone marrow in peripheral blood of irradiated/CCl<sub>4</sub>-intoxicated animals

Blood population analysis showed that samples from all chimeric animals contained a mean of 88% CD45+/GFP+ cells, while 12% were CD45+/GFP-. Among the CD45+/GFP+ population, there was a significant decrease in total lymphocytes and a significant increase in monocytes and neutrophils (Figure 3).

We also analyzed the presence of GFP+ BM-derived precursor cells in the blood, analyzing hematopoietic precursor cells (CD45+/CD34+) (Figure 4A) and endothelial precursor cells (CD45+/CD133+) (Figure 4B). There was no significant difference in these precursor cells between the Saline 30 d and CCl<sub>4</sub> 30 d groups (Figure 4C and D).

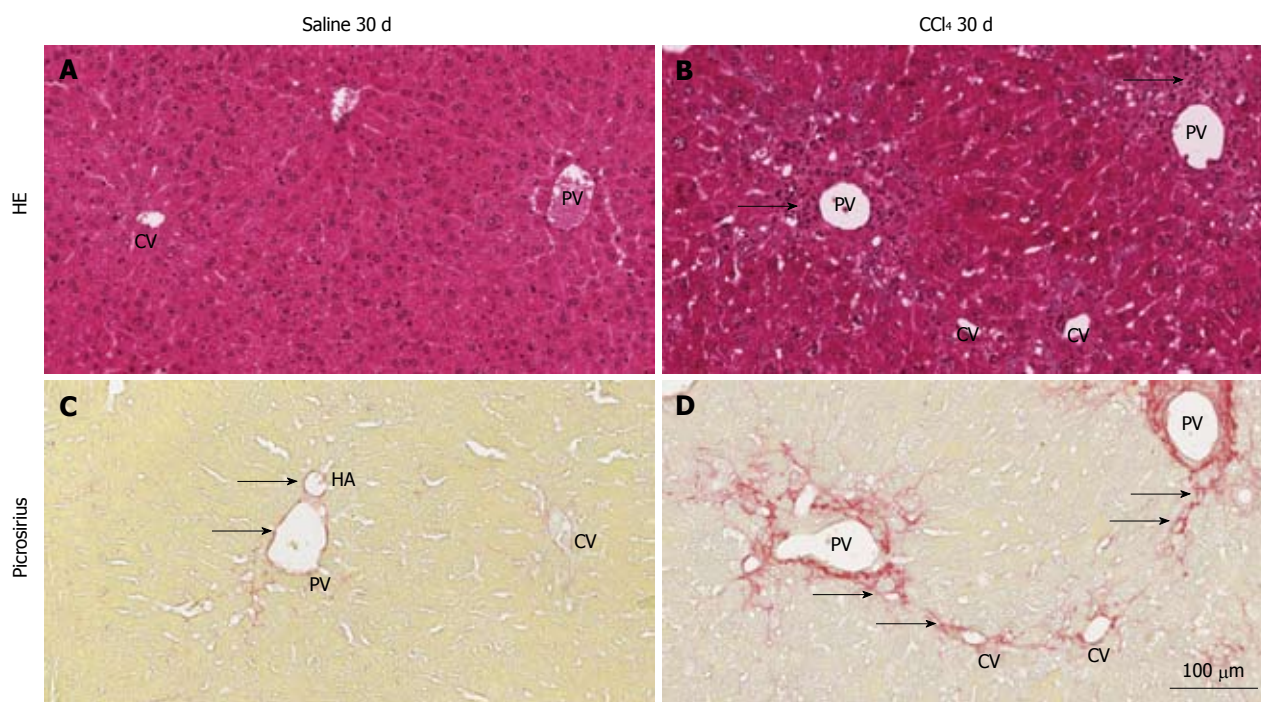
CD117 (c-Kit) precursor cells were analyzed in the BM (Figure 5A). The findings show a significant increase (*P* = 0.0142) in CD45+/GFP+/CD117+ cells in the CCl<sub>4</sub> 30 d group (5.2%  $\pm$  1.3%) compared to the Saline 30 d group (2.6%  $\pm$  1.8%) (Figure 5B).

### Bone marrow-derived cells are present in liver tissue

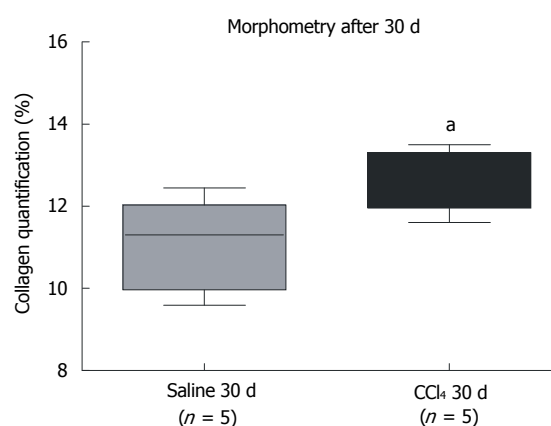
We analyzed cells from digested liver tissue and observed four well-defined subpopulations (Figure 6A): (1) high frequencies of GFP+/CD45+ and GFP-/CD45+ and (2) low frequencies of GFP+/CD45- and GFP-/CD45-. To identify cells of BM origin in liver tissue, we analyzed the GFP+/CD45+ subpopulation and observed a significant increase in this subpopulation in intoxicated livers (Saline 30 d = 3.2%  $\pm$  2.2% *vs* CCl<sub>4</sub> 30 d = 5.8%  $\pm$  1.3%; *P* = 0.0458) (Figure 6B).

To identify HSCs, we used the CD38 surface marker. This molecule is known to identify B lymphocytes and activated T cells and also labels HSCs<sup>[26]</sup>, indicating their presence in liver tissue. We identified two subpopulations of CD38+ cells: GFP+/CD38+ and GFP-/CD38+ (Figure 7A). We analyzed the GFP-/CD38+ subpopulation and found two other subpopulations: CD45+ and CD45- (Figure 7B). We also found that the GFP+/CD38+ cells were 100% CD45+ (Figure 7C). Considering that HSCs do not express the CD45 marker, we evaluated the GFP-/CD38+/CD45- subpopulation. We found a significant increase in that subpopulation when



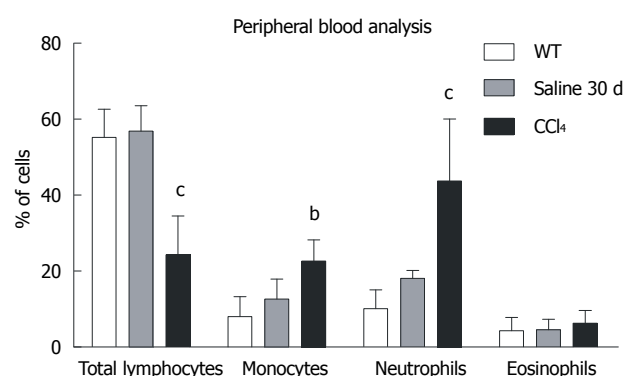


**Figure 1** Representative images of histological sections of livers of normal and chimeric animals stained with hematoxylin and eosin or picrosirius. A: hematoxylin and eosin (HE): shows the central vein (CV), portal vein (PV) and regular hepatocyte plates, representing normal architecture of the liver; B: The PV and CV present inflammatory infiltrate (arrows) due to injury of hepatocytes in this region by CCl<sub>4</sub>; C: Picrosirius: collagen (red) is present only in the perivascular region of the PV, hepatic artery (HA) (arrows) and lightly present surrounding the VC; D: a high deposition of collagen surrounding the PV and radiating fibers to the CV, indicating initiation of collagen septa (arrows) formation 30 d after injury induction.



**Figure 2** Quantification of collagen by morphometric analysis. A significant increase in collagen between the group that received CCl<sub>4</sub> compared to the group that received saline. The groups are represented by box-whisker diagrams in which the values in the boxes represent the medians of collagen content ( $n = 5$ ) and the bars the 25%-75% range. The Mann-Whitney post-test was used to test for significance. <sup>a</sup> $P = 0.0329$  vs the Saline 30 d group.

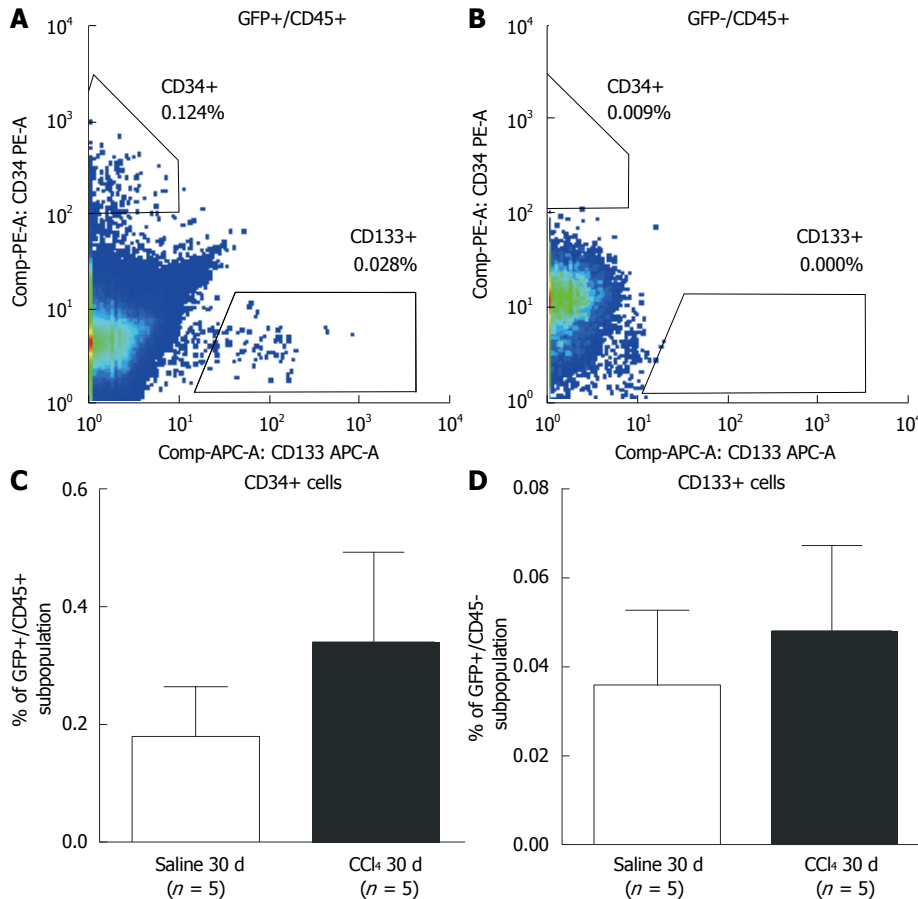
comparing the Saline 30 d group ( $9.3\% \pm 2.4\%$ ) to the CCl<sub>4</sub> 30 d ( $17.5\% \pm 3.9\%$ ) group ( $P = 0.004$ ) (Figure 7D), indicating that the increase in the HSC subpopulation was not of BM origin. We did not observe a significant increase in the GFP<sup>+</sup>/CD38<sup>+</sup>/CD45<sup>+</sup> population between the experimental groups, suggesting that there is no increase in B and T mobilization after injury (data not shown).



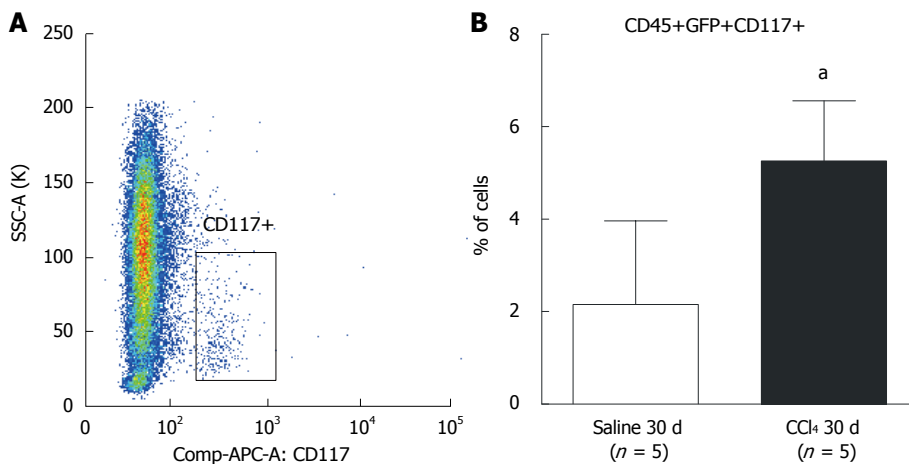
**Figure 3** Graphical analysis of subpopulations of peripheral blood of the WT, Saline 30 d and CCl<sub>4</sub> 30 d groups by flow cytometry. Only the animals in CCl<sub>4</sub> 30 d group showed significant differences from wild-type (WT): Total lymphocytes (WT =  $55.2\% \pm 7.4\%$ ; Saline 30 d =  $56.9\% \pm 6.6\%$ ; CCl<sub>4</sub> 30 d =  $24.3\% \pm 10.2\%$ ); Monocytes (WT =  $8.1\% \pm 5.3\%$ ; Saline 30 d =  $12.7\% \pm 5.3\%$ ; CCl<sub>4</sub> 30 d =  $22.7\% \pm 5.6\%$ ); Neutrophils (WT =  $10.1\% \pm 5.0\%$ ; Saline 30 d =  $18.2\% \pm 2.1\%$ ; CCl<sub>4</sub> 30 d =  $43.8\% \pm 16.3\%$ ). One-way analysis of variance (ANOVA) followed by Dunnett's test for multiple comparisons was used. <sup>b</sup> $P < 0.01$ , <sup>c</sup> $P < 0.001$  vs WT.

### No evidence of bone marrow contribution to liver fibrogenesis

The Saline 30 d group showed fusiform cells with green fluorescence, most of them situated in the sinusoidal space and a few in perivascular regions (Figure 8A), as found in GFP<sup>+</sup> animals (data not shown). In contrast, the CCl<sub>4</sub> 30 d group showed a higher number of GFP<sup>+</sup> cells diffusely distributed in the parenchyma and perivas-



**Figure 4** Flow cytometric analysis of subpopulations of hematopoietic and endothelial progenitor cells in bone marrow of chimeric mice. A: Representative results showing green fluorescent protein (GFP)+ precursor cells in both the Saline 30 d and CCl<sub>4</sub> 30 d groups (side bar = ancestry gating). CD45+/CD34+ (hematopoietic) and CD45+/CD133+ (endothelial) cells were identified; B: Representative results showing GFP-subpopulation precursor cells in the Saline 30 d and CCl<sub>4</sub> 30 d groups (side bar = ancestry gating). No progenitor cells were found in the GFP-subpopulation; C: Graphic of the percentage of GFP+/CD45+/CD34+ cells (hematopoietic progenitor cells); D: GFP+/CD45+/CD133+ (endothelial progenitor cells) in peripheral blood of the Saline 30 d and CCl<sub>4</sub> 30 d groups. No significant difference was detected between the groups by Student's *t* test.



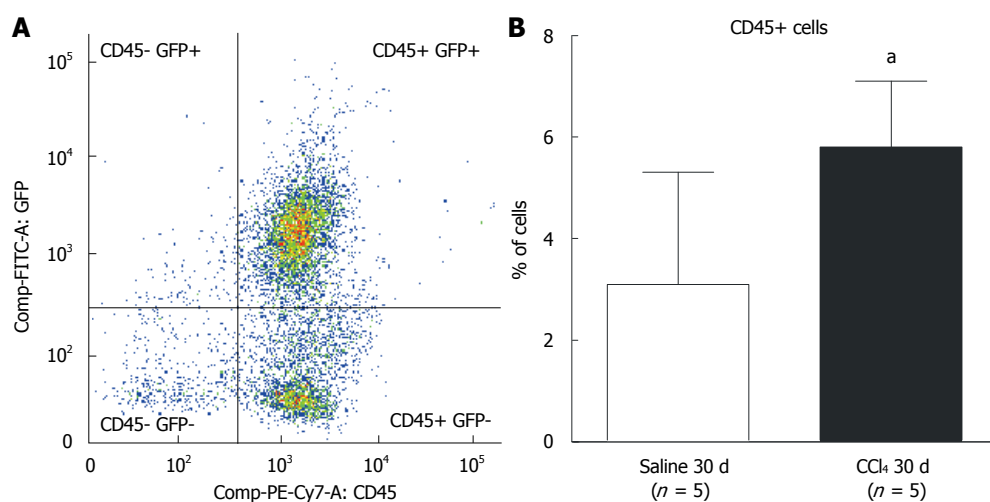
**Figure 5** Flow cytometric analysis of subpopulations of CD117+ precursor cells in bone marrow of chimeric mice. A: Dot-plot analysis of CD117+ cells found in bone marrow. Side-bar dot-plots represent ancestry gating; B: A significantly greater population of CD117+ cells was observed in liver tissue from the CCl<sub>4</sub> 30 d group compared to the Saline 30 d group (30 d saline = 2.6 ± 1.3%; CCl<sub>4</sub> 30 d = 5.6 ± 1.8%) (<sup>3</sup>*P* = 0.0142). GFP: green fluorescent protein.

cular region, presenting fusiform morphology, rounded morphology and also very small nuclei (Figure 8B).

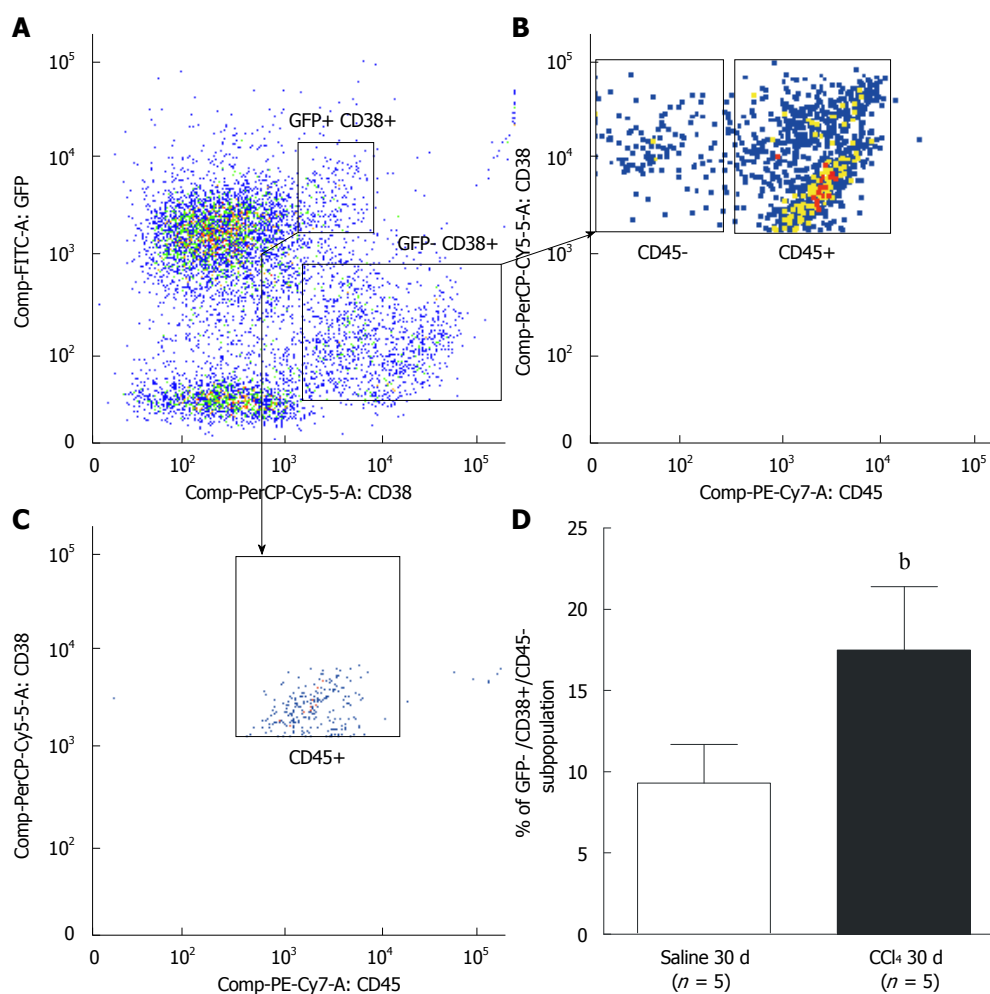
As we confirmed the increased migration of BM

GFP+ cells to the injured liver, we investigated if those cells were differentiating into activated HSCs and MF-like cells, which are responsible for the deposition of col-

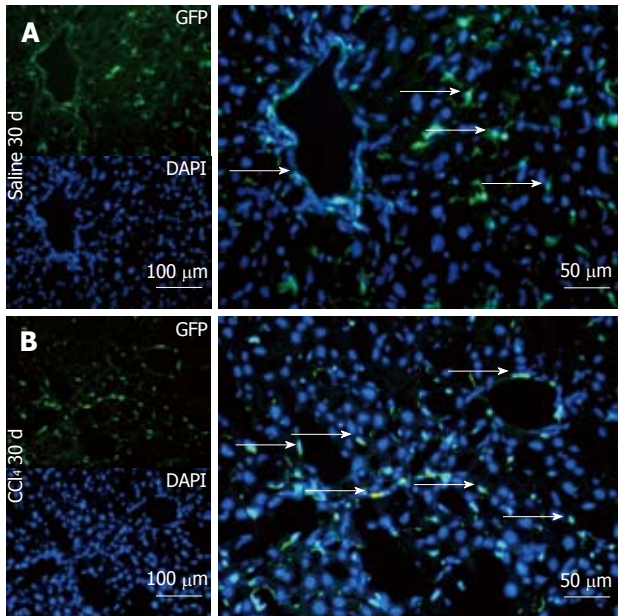




**Figure 6** Flow cytometric analysis of bone marrow subpopulations in the liver of chimeric mice. A: Dot-plot analysis of cell populations in the liver; B: A significantly greater population of CD45+ cells was observed in liver tissue of animals from the CCl<sub>4</sub> 30 d group compared to the Saline 30 d group (30 d saline = 3.1% ± 2.2%; CCl<sub>4</sub> 30 d = 5.8% ± 1.3%) (<sup>a</sup>*P* = 0.0458). GFP: green fluorescent protein.



**Figure 7** Representative analysis of CD38+ hepatic stellate cell subpopulations by flow cytometry. A: Two CD38+ subpopulations were observed: green fluorescent protein (GFP)+/CD38+ and GFP-/CD38+; B: Two subpopulations among GFP-/CD38+ cells were observed: GFP-/CD38+/CD45+ that identifies B lymphocytes, and GFP-/CD38+/CD45- that identifies hepatic stellate cells; C: Analysis of GFP-/CD38+ cells showed that all cells were of hematopoietic origin (CD45+); D: A significant increase of cells GFP-/CD38+/CD45- was observed in liver tissue of the CCl<sub>4</sub> 30 d group when compared to the Saline 30 d group (Saline 30 d = 9.3% ± 2.4%; CCl<sub>4</sub> 30 d = 17.5% ± 3.9%, <sup>b</sup>*P* = 0.004). The statistical test used was Student's *t* test.



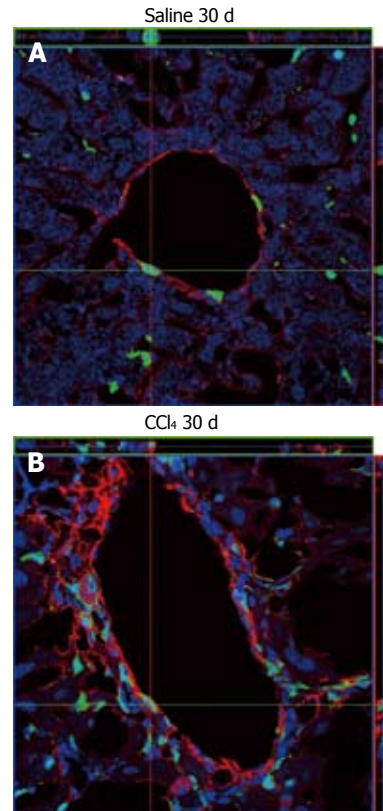
**Figure 8** Representative direct fluorescence images of hepatic sections of chimeric animals after transplantation. Liver samples of chimeric animals after transplantation of green fluorescent protein (GFP)+ bone marrow mononuclear cell, chimeric animals that received saline (Saline 30 d) and chimeric animals that received CCl<sub>4</sub> (CCl<sub>4</sub> 30 d). In panel A (Saline 30 d), the GFP channel shows the presence of green fluorescence; in the 4, 6-diamino-2-phenylindole panel, nuclei are stained blue in the same field above; the merge panel superposes the two images, where GFP+ cells (arrows) can be seen distributed in major hepatic parenchyma and with fusiform morphology. In panel B (CCl<sub>4</sub> 30 d), GFP+ cells can be seen with greater distribution in the hepatic parenchyma, some fusiform morphology (white arrows) and others with rounded morphology. DAPI: 4,6-diamino-2-phenyl indole.

lagen, by using an  $\alpha$ -SMA antibody as a specific marker for these cell types. Our results demonstrate that  $\alpha$ -SMA+ cells in normal and irradiated/non-intoxicated livers are mainly distributed surrounding periportal regions (Figure 9A), while in intoxicated animals there is an increase of  $\alpha$ -SMA+ cells that spread from periportal regions to parenchyma, representing initial septa formation (Figure 9B). These results indicate proliferation of cells with MF characteristics when there is liver damage. However, in our confocal analysis, we found no co-localization of  $\alpha$ -SMA+ with GFP+ cells either in normal or injured tissue, suggesting that cells of BM origin do not contribute to the population of MFs, even after induction of liver injury.

## DISCUSSION

In the present study, we showed that BM-derived progenitor subpopulations do not contribute to the fibrogenic MF population after liver injury in mice.

It is already known that the BM is altered after chronic hepatic disease<sup>[27-29]</sup>. The presence of inflammatory cells in PB indirectly indicates alterations in the proliferation of cells in BM<sup>[30]</sup>. We observed a significant increase in mature hematopoietic cells in the blood of CCl<sub>4</sub>-intoxicated animals (Figure 3), indicating a chronic inflammatory condition 30 d after liver injury induction. Because inflama-



**Figure 9** Immunostaining analysis of  $\alpha$ -smooth muscle actin in liver samples from chimeric animals by confocal microscopy. A:  $\alpha$ -smooth muscle actin ( $\alpha$ -SMA)+ cells in the perivascular region were observed where green fluorescent protein (GFP)+ cells could also be seen, but the two cell types do not co-localize, as can be seen by the orientation of the red and green bars; B: An increase in reactivity against  $\alpha$ -SMA around the perivascular region was observed, also with augmentation of GFP+ cells, but again these cell types do not co-localize. In both images the nuclei were stained with TO-PRO3 (blue).

tory cells are increased, it is expected that the progenitor compartment of BM should also be altered. In fact, we observed an increase in CD117 (c-Kit+) cells in BM of injured mice, which is a marker for BM progenitors such as common myeloid progenitors (CMPs)<sup>[31]</sup>.

Among the progenitor cells in blood, we could identify a GFP+/CD45+/CD34+ subpopulation, a rare population that is more related to hematopoietic progenitor cells<sup>[32]</sup> but also to circulating fibrocytes<sup>[19]</sup>. We found this GFP+/CD45+/CD34+ population at a very low percentage in total PB and it did not increase even after 30 d of liver injury. Because CMPs were increased in BM, we believe that hematopoietic stem cells are quickly stimulated to differentiate into CMPs in response to signaling from inflammatory cells at the injury site, thus giving primitive hematopoietic stem cells a short life-span. Consequently, recruitment of hematopoietic stem cells to blood may not be efficient. Endothelial progenitor cells (CD133+) may be affected by the same behavior. Concerning fibrocytes, Scholten *et al.*<sup>[33]</sup> have shown that fibrocytes are stimulated to migrate even in non-injured liver in older but not in younger mice. Therefore, detection of fibrocytes in blood may be difficult since we used young mice. We tried to evaluate whether hematopoietic progenitors could be identified in the liver by flow cytometry.

Studies report that hematopoietic stem cells can comprise 0.1% to 1.0% of total blood cells as well as fibrocytes<sup>[24]</sup>. Our samples presented a total hematopoietic cell frequency in liver of 6%, which is very low. For that reason, detection of rare cells in a low-frequency population is very difficult, and it will be necessary to have a

much larger sample to obtain reliable data to address this question. Although we could not detect if circulating fibroblasts were present in blood and liver samples, we suggest that this subpopulation did not contribute to liver fibrosis because no GFP+/ $\alpha$ -SMA+ cells were detected in our liver tissue specimens. Moreover, even if they did transdifferentiate to an MF-like cell, they would be present at such a low frequency that they would be unlikely to exert a major influence on fibrogenesis.

On the other hand, HSCs do contribute importantly to the fibrogenetic process<sup>[34]</sup>, but there is still controversy in the literature concerning the contribution of the BM to this liver subpopulation. Baba *et al.*<sup>[35]</sup> reported co-localization of GFP and  $\alpha$ -SMA in non-parenchymal cells in *in vitro* and *in vivo* models, whereas Higashiyama *et al.*<sup>[36]</sup> showed a lack of co-localization of those markers after peak fibrosis. Our results corroborate the findings of Higashiyama *et al.*<sup>[36]</sup>, and suggest that BM-derived cells do not contribute to the HSC compartment. To confirm this hypothesis, we identified the HSCs by flow cytometry, using CD38 as a marker. The CD45-/CD38+ subpopulation was GFP negative, which agrees with our confocal microscopy results. Therefore, we suggest that the HSC population is not of BM hematopoietic origin, as it lacks both CD45 and GFP. Our results do not corroborate those reported by Miyata *et al.*<sup>[9]</sup>, who reported finding enhanced GFP+ HSCs in a longer injury induction experimental model, which may suggest that duration of injury could be a factor in determining the extent of BM cell contribution to fibrosis.

In conclusion, we found that BM progenitor cells do not contribute to fibrosis. However, there is a high response toward inflammatory cell recruitment that may contribute to fibrosis, by producing pro-inflammatory factors that stimulate HSCs and perivascular MFs of liver origin.

## COMMENTS

### Background

Bone marrow (BM) has been proposed as a source of cells for alternative therapy in liver diseases. Recent findings, however, suggest a potential deleterious effect of BM-derived cells in the regenerating liver.

### Research frontiers

Results published so far show no consensus on the role of the BM in liver repair. Indeed, this issue remains one of the most controversial in the field of regenerative medicine. In this study, the authors demonstrate that BM stem cells do not participate in liver fibrogenesis.

### Innovations and breakthroughs

Publications related to liver fibrosis and cell therapy have suggested that BM cells could contribute to liver fibrosis by differentiating into hepatic stellate cells (HSCs) and myofibroblasts (MFs), but have not identified which specific BM subpopulation participates in this process. In this study, the authors demonstrate that two BM subpopulations, the hematopoietic and endothelial progenitor cells, do not contribute to fibrosis by their differentiation to those fibrotic cells.

### Applications

By understanding how BM cells function in an injured liver, this study is useful as a guide for strategies related to cell therapies using BM cells.

### Terminology

Hematopoietic and endothelial progenitor cells are BM subpopulations which

participate in hematopoiesis and vasculogenesis, respectively. HSCs are non-parenchymal liver cells found in the perisinusoidal space (Space of Disse) and are pivotal in liver fibrogenesis by producing fibrillar extracellular matrix when in an activated state.

### Peer review

In this study, the findings suggest that the response toward inflammatory cell recruitment by producing pro-inflammatory factors that stimulate HSCs and perivascular MFs of liver origin may contribute to fibrosis, while no evidence in the study supports that BM-derived progenitor cells contribute to the population of  $\alpha$ -smooth muscle actin-producing cells.

## REFERENCES

- 1 Souza BS, Nogueira RC, de Oliveira SA, de Freitas LA, Lyra LG, Ribeiro dos Santos R, Lyra AC, Soares MB. Current status of stem cell therapy for liver diseases. *Cell Transplant* 2009; **18**: 1261-1279
- 2 Couto BG, Goldenberg RC, da Fonseca LM, Thomas J, Gutfilen B, Resende CM, Azevedo F, Mercante DR, Torres AL, Coelho HS, Maiolino A, Alves AL, Dias JV, Moreira MC, Sampaio AL, Sousa MA, Kasai-Brunswick TH, Souza SA, Campos-de-Carvalho AC, Rezende GF. Bone marrow mononuclear cell therapy for patients with cirrhosis: a Phase 1 study. *Liver Int* 2011; **31**: 391-400
- 3 Sakaida I, Terai S, Yamamoto N, Aoyama K, Ishikawa T, Nishina H, Okita K. Transplantation of bone marrow cells reduces CCl4-induced liver fibrosis in mice. *Hepatology* 2004; **40**: 1304-1311
- 4 Terai S, Ishikawa T, Omori K, Aoyama K, Marumoto Y, Urata Y, Yokoyama Y, Uchida K, Yamasaki T, Fujii Y, Okita K, Sakaida I. Improved liver function in patients with liver cirrhosis after autologous bone marrow cell infusion therapy. *Stem Cells* 2006; **24**: 2292-2298
- 5 Cao BQ, Lin JZ, Zhong YS, Huang SB, Lin N, Tang ZF, Chen R, Xiang P, Xu RY. Contribution of mononuclear bone marrow cells to carbon tetrachloride-induced liver fibrosis in rats. *World J Gastroenterol* 2007; **13**: 1851-1854; discussion 1854-1856
- 6 Oliveira SA, Souza BS, Guimaraes-Ferreira CA, Barreto ES, Souza SC, Freitas LA, Ribeiro-Dos-Santos R, Soares MB. Therapy with bone marrow cells reduces liver alterations in mice chronically infected by *Schistosoma mansoni*. *World J Gastroenterol* 2008; **14**: 5842-5850
- 7 Forbes SJ, Russo FP, Rey V, Burra P, Ruge M, Wright NA, Alison MR. A significant proportion of myofibroblasts are of bone marrow origin in human liver fibrosis. *Gastroenterology* 2004; **126**: 955-963
- 8 Shirakura K, Masuda H, Kwon SM, Obi S, Ito R, Shizuno T, Kurihara Y, Mine T, Asahara T. Impaired function of bone marrow-derived endothelial progenitor cells in murine liver fibrosis. *Biosci Trends* 2011; **5**: 77-82
- 9 Miyata E, Masuya M, Yoshida S, Nakamura S, Kato K, Sugimoto Y, Shibasaki T, Yamamura K, Ohishi K, Nishii K, Ishikawa F, Shiku H, Katayama N. Hematopoietic origin of hepatic stellate cells in the adult liver. *Blood* 2008; **111**: 2427-2435
- 10 Quintanilha LF, Mannheimer EG, Carvalho AB, Paredes BD, Dias JV, Almeida AS, Gutfilen B, Barbosa da Fonseca LM, Resende CM, Rezende GF, Campos de Carvalho AC, Goldenberg RC. Bone marrow cell transplant does not prevent or reverse murine liver cirrhosis. *Cell Transplant* 2008; **17**: 943-953
- 11 Mannheimer EG, Quintanilha LF, Carvalho AB, Paredes BD, Gonçalves de Carvalho F, Takiya CM, Resende CM, Ferreira da Motta Rezende G, Campos de Carvalho AC, Schanaider A, dos Santos Goldenberg RC. Bone marrow cells obtained from cirrhotic rats do not improve function or reduce fibrosis in a chronic liver disease model. *Clin Transplant* 2011; **25**: 54-60
- 12 Carvalho AB, Quintanilha LF, Dias JV, Paredes BD,



- Mannheimer EG, Carvalho FG, Asensi KD, Gutfilen B, Fonseca LM, Resende CM, Rezende GF, Takiya CM, de Carvalho AC, Goldenberg RC. Bone marrow multipotent mesenchymal stromal cells do not reduce fibrosis or improve function in a rat model of severe chronic liver injury. *Stem Cells* 2008; **26**: 1307-1314
- 13 **Pinzani M**, Rombouts K. Liver fibrosis: from the bench to clinical targets. *Dig Liver Dis* 2004; **36**: 231-242
- 14 **Kisseleva T**, Brenner DA. Fibrogenesis of parenchymal organs. *Proc Am Thorac Soc* 2008; **5**: 338-342
- 15 **Hernandez-Gea V**, Friedman SL. Pathogenesis of liver fibrosis. *Annu Rev Pathol* 2011; **6**: 425-456
- 16 **Cassiman D**, Libbrecht L, Desmet V, Denef C, Roskams T. Hepatic stellate cell/myofibroblast subpopulations in fibrotic human and rat livers. *J Hepatol* 2002; **36**: 200-209
- 17 **Benyon RC**, Arthur MJ. Extracellular matrix degradation and the role of hepatic stellate cells. *Semin Liver Dis* 2001; **21**: 373-384
- 18 **Parola M**, Marra F, Pinzani M. Myofibroblast-like cells and liver fibrogenesis: Emerging concepts in a rapidly moving scenario. *Mol Aspects Med* 2008; **29**: 58-66
- 19 **Bucala R**, Spiegel LA, Chesney J, Hogan M, Cerami A. Circulating fibrocytes define a new leukocyte subpopulation that mediates tissue repair. *Mol Med* 1994; **1**: 71-81
- 20 **Dolgachev VA**, Ullenbruch MR, Lukacs NW, Phan SH. Role of stem cell factor and bone marrow-derived fibroblasts in airway remodeling. *Am J Pathol* 2009; **174**: 390-400
- 21 **Haudek SB**, Xia Y, Huebener P, Lee JM, Carlson S, Crawford JR, Pilling D, Gomer RH, Trial J, Frangogiannis NG, Entman ML. Bone marrow-derived fibroblast precursors mediate ischemic cardiomyopathy in mice. *Proc Natl Acad Sci USA* 2006; **103**: 18284-18289
- 22 **Nimphius W**, Moll R, Olbert P, Ramaswamy A, Barth PJ. CD34+ fibrocytes in chronic cystitis and noninvasive and invasive urothelial carcinomas of the urinary bladder. *Virchows Arch* 2007; **450**: 179-185
- 23 **Kisseleva T**, Uchinami H, Feirt N, Quintana-Bustamante O, Segovia JC, Schwabe RF, Brenner DA. Bone marrow-derived fibrocytes participate in pathogenesis of liver fibrosis. *J Hepatol* 2006; **45**: 429-438
- 24 **Keeley EC**, Mehrad B, Strieter RM. The role of fibrocytes in fibrotic diseases of the lungs and heart. *Fibrogenesis Tissue Repair* 2011; **4**: 2
- 25 **Okabe M**, Ikawa M, Kominami K, Nakanishi T, Nishimune Y. 'Green mice' as a source of ubiquitous green cells. *FEBS Lett* 1997; **407**: 313-319
- 26 **March S**, Graupera M, Rosa Sarrias M, Lozano F, Pizcueta P, Bosch J, Engel P. Identification and functional characterization of the hepatic stellate cell CD38 cell surface molecule. *Am J Pathol* 2007; **170**: 176-187
- 27 **Meagher RC**, Sieber F, Spivak JL. Suppression of hematopoietic-progenitor-cell proliferation by ethanol and acetaldehyde. *N Engl J Med* 1982; **307**: 845-849
- 28 **Zhao S**, Fu YM, Li XF, Jin ZF, Zhao RB, Huang Q, Zhang FM, Zhang WH. Alterations of bone marrow sinusoidal endothelium in rat and patients with liver cirrhosis. *Dig Dis Sci* 2010; **55**: 654-661
- 29 **Dang SS**, Wang WJ, Gao N, Wang SD, Li M, Liu LY, Sun MZ, Dong T. Apoptotic bone marrow CD34+ cells in cirrhotic patients. *World J Gastroenterol* 2011; **17**: 2044-2048
- 30 **Bhunchet E**, Eishi Y, Wake K. Contribution of immune response to the hepatic fibrosis induced by porcine serum. *Hepatology* 1996; **23**: 811-817
- 31 **Franco CB**, Chen CC, Drukker M, Weissman IL, Galli SJ. Distinguishing mast cell and granulocyte differentiation at the single-cell level. *Cell Stem Cell* 2010; **6**: 361-368
- 32 **Kucia M**, Reza R, Jala VR, Dawn B, Ratajczak J, Ratajczak MZ. Bone marrow as a home of heterogeneous populations of nonhematopoietic stem cells. *Leukemia* 2005; **19**: 1118-1127
- 33 **Scholten D**, Reichart D, Paik YH, Lindert J, Bhattacharya J, Glass CK, Brenner DA, Kisseleva T. Migration of fibrocytes in fibrogenic liver injury. *Am J Pathol* 2011; **179**: 189-198
- 34 **Bataller R**, Brenner DA. Hepatic stellate cells as a target for the treatment of liver fibrosis. *Semin Liver Dis* 2001; **21**: 437-451
- 35 **Baba S**, Fujii H, Hirose T, Yasuchika K, Azuma H, Hoppo T, Naito M, Machimoto T, Ikai I. Commitment of bone marrow cells to hepatic stellate cells in mouse. *J Hepatol* 2004; **40**: 255-260
- 36 **Higashiyama R**, Inagaki Y, Hong YY, Kushida M, Nakao S, Niioka M, Watanabe T, Okano H, Matsuzaki Y, Shiota G, Okazaki I. Bone marrow-derived cells express matrix metalloproteinases and contribute to regression of liver fibrosis in mice. *Hepatology* 2007; **45**: 213-222

S- Editor Song XX L- Editor Webster JR E- Editor Yan JL

## Hepatic osteodystrophy complicated with bone fracture in early infants with biliary atresia

Tadao Okada, Shohei Honda, Hisayuki Miyagi, Masashi Minato, Akinobu Taketomi

Tadao Okada, Shohei Honda, Hisayuki Miyagi, Masashi Minato, Department of Pediatric Surgery, Hokkaido University Hospital, Sapporo 060-8648, Japan  
Akinobu Taketomi, Department of Gastroenterological Surgery I, Hokkaido University Graduate School of Medicine, Sapporo 060-8638, Japan

**Author contributions:** Okada T contributed to study concept and design, acquisition of data, analysis and interpretation of data, drafting of manuscript; Honda S, Miyagi H and Minato M contributed to study supervision; Taketomi A contributed to critical revision of the manuscript for important intellectual content.

**Correspondence to:** Tadao Okada, MD, Department of Pediatric Surgery, Hokkaido University Hospital, Kita-ku, Kita 14, Nishi 5, Sapporo 060-8648, Japan. [okadata@med.hokudai.ac.jp](mailto:okadata@med.hokudai.ac.jp)  
Telephone: +81-11-7067381 Fax: +81-11-7067384

Received: November 24, 2011 Revised: September 15, 2012

Accepted: October 26, 2012

Published online: October 27, 2012

deficiency

**Peer reviewers:** Qiang Liu, PhD, Vaccine and Infectious Disease Organization, University of Saskatchewan, 120 Veterinary Road, Saskatoon, Saskatchewan, S7N 5E3, Canada; Pietro Invernizzi, MD, PhD, Division of Internal Medicine and Hepatobiliary Immunopathology Unit, IRCCS Istituto Clinico Humanitas, via A. Manzoni 113, 20089 Rozzano, Milan, Italy

Okada T, Honda S, Miyagi H, Minato M, Taketomi A. Hepatic osteodystrophy complicated with bone fracture in early infants with biliary atresia. *World J Hepatol* 2012; 4(10): 284-287 Available from: URL: <http://www.wjgnet.com/1948-5182/full/v4/i10/284.htm> DOI: <http://dx.doi.org/10.4254/wjh.v4.i10.284>

### Abstract

Biliary atresia (BA) is one of the major hepatobiliary abnormalities in infants and one of the causes of hepatic osteodystrophy. Bone disease may be caused by the malabsorption of calcium and magnesium by vitamin D in hepatobiliary diseases in which bile flow into the intestines is deficient or absent. Bone fracture before Kasai hepatic portoenterostomy or within one month after the procedure in an infant with BA is very rare. We herein report two infants: one infant with BA who initially presented with a bone fracture before Kasai hepatic portoenterostomy, and the other at 4 wk after Kasai hepatic portoenterostomy, and also provide a review of the literature. Moreover, we conclude that clinicians should consider BA in infants with bone fracture during early infancy.

© 2012 Baishideng. All rights reserved.

**Key words:** Biliary atresia; Bone fracture; Hepatic osteodystrophy; Kasai hepatic portoenterostomy; Vitamin D

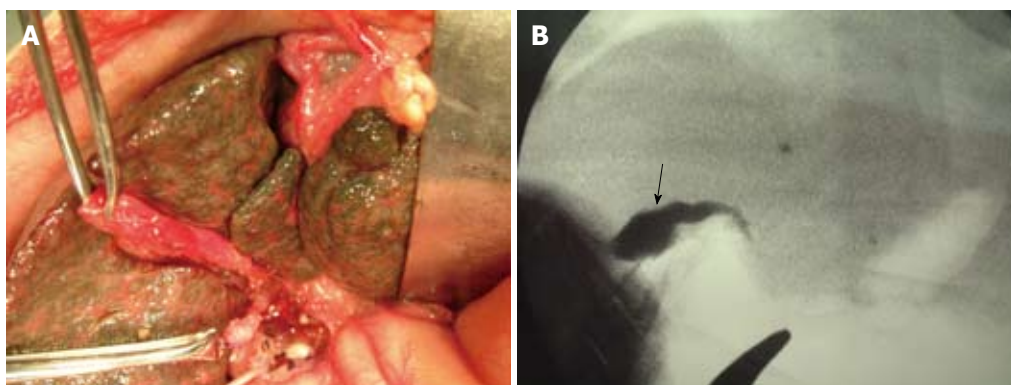
### INTRODUCTION

Clinical findings in children with biliary atresia (BA) characteristically include jaundice and acholic stools at 1 or 2 mo after birth<sup>[1]</sup>. Osteodystrophy is a well-recognized complication of chronic liver disease. BA is one of the major hepatobiliary abnormalities in infants and one of the causes of hepatic osteodystrophy<sup>[1]</sup>.

Vitamin D is hydroxylated at the carbon 25 position to form 25-hydroxy-vitamin D (25-OH-D)<sup>[2]</sup>. This occurs primarily in the liver<sup>[2]</sup>. Bile is important for the intestinal absorption of calcium and magnesium because it is necessary for the absorption of vitamin D<sup>[1]</sup>.

In chronic liver disease, particularly where there is chronic cholestasis, generalized skeletal demineralization or rachitic change is seen<sup>[3]</sup>. Multiple spontaneous fractures of both the ribs and long bones have been reported in such infants. Furthermore, bone fractures are sometimes noted in patients with BA in the end-stage before liver transplantation<sup>[4]</sup>. However, bone fracture before Kasai hepatic portoenterostomy and within one month after the procedure in infants with BA is very rare.

We report two infants: firstly, a patient with BA who initially presented with bone fracture before Kasai he-



**Figure 1** Intraoperative and imaging features. A: On laparotomy, the liver was brown and firm with a dull edge, suggesting cholestasis; B: Intraoperative cholangiography revealed a patent gallbladder (arrow) and no patency of the extrahepatic bile duct.



**Figure 2** Plain skeletal radiographic features at the 7 d after hepaticojunctionostomy in the case 1. Anteroposterior (A) and lateral (B) plain radiographs showing a displaced fracture (arrows) of the right distal femur.

patic portoenterostomy, and secondly, a patient with the onset of bone fracture within one month after Kasai hepatic portoenterostomy, and also provide a review of the literature.

## CASE REPORT

### Case 1

A girl was born vaginally at 39 wk gestation, weighing 2522 g. She presented with neither jaundice nor acholic stools. The infant was fed human milk. She was well nourished but was observed to have jaundice at a medical check-up at 1 mo of age. Abdominal ultrasonography (US) and computed tomography showed a sufficiently large gallbladder. Total and direct bilirubin (DB) decreased gradually at the follow-up checks. The patient presented with acholic stools and increased jaundice at the age of 5 mo, and was subsequently admitted to our institution for further examinations. Laboratory studies upon admission revealed the following: aspartate aminotransferase (AST) 337 IU/L (normal range), alanine aminotransferase (ALT) 241 IU/L (normal range), total bilirubin (TB) 11.3 mg/dL, DB 7.4 mg/dL, alkaline phosphatase (ALP) 5,547 IU/L (normal range),  $\gamma$ -glutamyl transpeptidase ( $\gamma$ -GTP) 457 IU/L (normal range), choline esterase 192 IU/L (normal range), and serum calcium 8.1 mg/dL (normal range). There was severe jaundice noted

at the conjunctiva. The findings on abdominal US were unevenness on the liver surface and an atrophic gallbladder which did not contract after the feeding of milk. Magnetic resonance cholangio-pancreatography (MRCP) revealed dilatation of neither the common bile duct nor intrahepatic bile duct. Therefore, BA was suspected based on these findings, and the infant underwent an exploratory laparotomy at 182 d of age. The patient started oral vitamin D at 173 d of age.

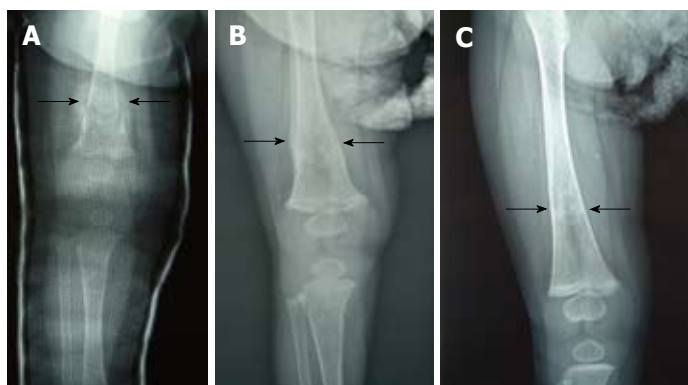
On laparotomy, the liver was brown and firm with a dull edge, suggesting cholestasis (Figure 1A). Intraoperative cholangiography revealed a patent gallbladder and no patency of the extrahepatic bile duct (Figure 1B). The macroscopic findings showed that the bilateral hepatic ducts and extrahepatic bile duct consisted of only remnants. The infant was diagnosed as BA (IIb)<sup>[5]</sup> based on cholangiographic and macroscopic findings. The remnants were totally removed en block and a Roux-en-Y hepaticojunctionostomy was performed with a Roux loop of 60 cm applied antecolically. Microscopic findings of the liver biopsy specimen were pre-cirrhotic.

The patient could not move her right leg 1 d before the laparotomy, and a plain skeletal radiograph of the femur was performed 7 d after the HJ, when the general condition of the patient was stable. A displaced fracture of the right distal femur was shown by the plain radiograph (Figure 2A and B). Hepatic osteodystrophy was suspected based on the fact that there was no history of femur trauma and the patient suffered from chronic cholestasis. Child abuse by the family was not considered from the situation. Callus formation was seen 8 d after the application of an immobilizing plaster bandage (Figure 3A). The plaster bandage was removed after 20 d and the fracture of the right femur was cured at 6 mo post fracture (Figure 3B and C). The patient coughed up blood due to the perforation of esophageal varices and underwent a living-related liver transplantation at 10 mo of age. The postoperative course of living-related liver transplantation was uneventful and she is currently well at 4 years of age.

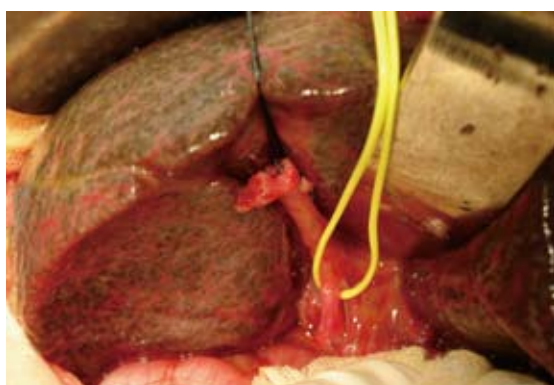
### Case 2

A girl was born vaginally at 36 wk gestation, weighing 2310 g. She presented with neither jaundice nor acholic stools. She was well nourished but was observed to have





**Figure 3** Plain skeletal radiographic features at the 8 d after the application of an immobilizing plaster bandage for the femur fracture in the case 1. Callus formation (arrows) was seen 8 d after the application of an immobilizing plaster bandage (A) in case 1. The plaster bandage was removed after 20 d (B) and the fracture of the right femur was cured 6 mo post-fracture (C).

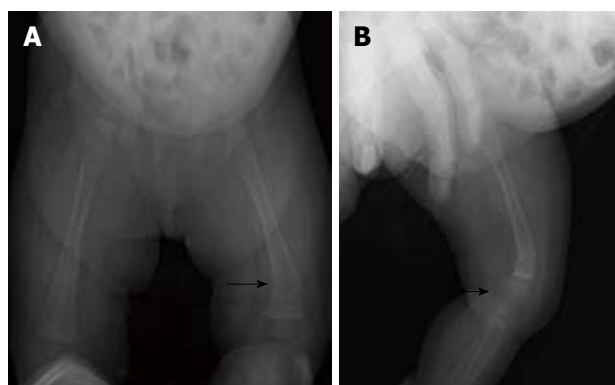


**Figure 4** Intraoperative features. On laparotomy, the liver was brown and firm with a dull edge, suggesting cholestasis.

jaundice at a medical check-up at 1 mo of age. The patient presented with acholic stools and increased jaundice at the age of 3 mo at a medical check-up, and was consequently admitted to our institution for further examinations. Laboratory studies upon admission revealed the following: AST 573 IU/L, ALT 377 IU/L, TB 6.6 mg/dL, DB 4.4 mg/dL, ALP 2248 IU/L,  $\gamma$ -GTP 666 IU/L, choline esterase 181 IU/L, and serum calcium 9.2 mg/dL. The findings on abdominal US and MRCP were just as same as those of the case 1. Therefore, BA was suspected, and the infant underwent an exploratory laparotomy at 113 d of age. The patient started oral vitamin D at 3 mo of age.

On laparotomy, the liver was brown and firm with a dull edge, suggesting cholestasis (Figure 4). Intraoperative cholangiography revealed a patent gallbladder and no patency of the extrahepatic bile duct. The infant was diagnosed as BA (II b $\gamma$ )<sup>[5]</sup> based on cholangiographic and macroscopic findings. The remnants were totally removed en block and a Roux-en-Y hepaticojejunostomy was performed with a Roux loop of 60 cm applied antecolicly. Microscopic findings of the liver biopsy specimen were cirrhotic.

The patient could not move her left leg at 28 d post-laparotomy. A displaced fracture of the left distal femur was shown by plain skeletal radiograph (Figure 5A and B). Hepatic osteodystrophy was suspected based on the fact that there was no history of femur trauma and the



**Figure 5** Plain skeletal radiographic features at the 28 d after hepaticojejunostomy in the case 2. Anteroposterior (A) and lateral (B) plain radiographs showing a displaced fracture (arrows) of the left distal femur.

patient suffered from chronic cholestasis. Child abuse by the family was not considered from the situation. Callus formation was seen 14 d after the application of an immobilizing plaster bandage. The plaster bandage was removed after 20 d and the fracture of the left femur was cured at 6 mo after post-fracture. Jaundice has been resolved and she is currently well at 11 mo of age.

## DISCUSSION

BA is a rare disease with an incidence of approximately 1:10 000 live births in Japan and the Far East<sup>[6]</sup>. The most frequent symptom is prolonged jaundice. Several reports have shown that osteodystrophy was associated with severe chronic liver disease despite the administration of vitamin and mineral supplements<sup>[1]</sup>. Argao *et al*<sup>[7]</sup> suggested that the bone mineral content of patients with hepatic osteodystrophy did not improve despite successful normalization of the serum 25-OH vitamin D concentration by enhancing vitamin D absorption from the gastrointestinal tract. Chongsrisawat *et al*<sup>[8]</sup> reported that osteoporosis was recognized in up to 80% of a group of jaundiced BA patients in comparison with only 13.6% in a non-jaundiced group.

In BA, metabolic disturbance results from impairment of the passage of bile salts into the alimentary canal. As a consequence, the inadequate emulsification of fat results

in the incomplete absorption of vitamin D. Vitamin D is hydroxylated to 25-OH-D in the liver<sup>[2]</sup>. Additionally, over the course of the disease, liver cirrhosis develops and the hydroxylation of vitamin D is impaired. Vitamin D and hence calcium absorption are thus diminished. 25-OH-D is thought to be converted to more active forms, 125- or 2125-dehydro-OH-D. Rickets and osteoporosis were reported to be found in 23 of 39 patients (59%) with surgically unrepaired BA<sup>[1]</sup>.

We herein report two infants: one infant with BA who initially presented with a bone fracture before Kasai hepatic portoenterostomy, and the other at 4 wk after Kasai hepatic portoenterostomy. There are a number of factors which may be important in the etiology of bone fractures in children, including trauma, metabolic bone disease, drugs, and immobilization<sup>[3]</sup>. However, the lack of significant trauma in the majority of cases (91%) is a notable feature in children with BA<sup>[3]</sup>. Hill *et al*<sup>[3]</sup> reported 12 (19%) children with fractures before and after transplantation out of 63 undergoing liver transplantation. Eight of 12 children with fractures in BA had no identifiable trauma. The age at the time of fracture in BA ranged from 3 to 16 mo after birth, and the affected children suffered from osteopenia (generalized reduction in bone density). The fracture site was the ribs or long bones, and multiple fractures were seen in 2 children with BA (7 and 8 mo after birth). However, Hill *et al*<sup>[3]</sup> did not describe administering vitamin D supplements. BA patients with severe cholestasis have a risk of bone fracture despite the administration of essential vitamins and minerals such as our cases. In our cases, BA was diagnosed at 6 mo after birth in case 1 and at 3 mo after birth in case 2, with suspected severe cholestasis.

Conservative management such as immobilization using plaster bandages is generally effective for fractures in BA, and there were no complications related to fractures in our cases. In the literature, internal fixation was required in one case with oxalosis for a fractured neck of the femur<sup>[1]</sup>. The early diagnosis and treatment of BA before the occurrence of bone fracture is important. The measurement of reflected light from the surface of feces by near infrared reflectance spectroscopy was introduced by Akiyama *et al*<sup>[9]</sup> for the differential diagnosis of cholestatic diseases in infants. Another method, mass screening using color picture cards depicting normal and acholic stools, was carried out at 1 and 2 mo after

birth in a Japanese prefecture<sup>[10]</sup>. Eight cases of BA were detected using this mass screening method during a 3-year period, with a specificity of 99.9% and a sensitivity of 80.0%. Such screening procedures could result in improved detection of BA in infants before bone disorders occur.

In summary, clinical awareness of BA should be maintained both in terms of careful handling to prevent possible bone fracturing and also in considering fractures as a possible diagnostic factor in children with reluctance to use a limb, even in the absence of previous trauma, before Kasai hepatic portoenterostomy. Radiological awareness is also important to avoid missing unsuspected fractures on radiographs.

## REFERENCES

- 1 Kobayashi A, Kawai S, Utsunomiya T, Obe Y. Bone disease in infants and children with hepatobiliary disease. *Arch Dis Child* 1974; **49**: 641-646
- 2 Toki A, Todani T, Watanabe Y, Sato Y, Ogura K, Yoshikawa M, Yamamoto S, Wang ZQ. Bone mineral analysis in patients with biliary atresia after successful Kasai procedure. *Tohoku J Exp Med* 1997; **181**: 213-216
- 3 Hill SA, Kelly DA, John PR. Bone fractures in children undergoing orthotopic liver transplantation. *Pediatr Radiol* 1995; **25** Suppl 1: S112-S117
- 4 Katsura S, Ogita K, Taguchi T, Suita S, Yoshizumi T, Soejima Y, Shimada M, Maehara Y. Effect of liver transplantation on multiple bone fractures in an infant with end-stage biliary atresia: a case report. *Pediatr Surg Int* 2005; **21**: 47-49
- 5 Kasai M, Sawaguchi S, Akiyama T, Saito J, Suruga K, Kira J, Ueta T, Okamoto E, Kimura S, Ikeda K. A proposal of new classification of biliary atresia. *J Jpn Soc Pediatr Surg* 1976; **12**: 327-331
- 6 Hashizume K, Nakajo T, Naito H, Naito T, Aso S, Aso K, Omiya T, Kamamorita K. Hemorrhagic disease of the infant accompanied with biliary atresia. *J Jpn Soc Pediatr Surg* 1980; **16**: 561-568
- 7 Argao EA, Specker BL, Heubi JE. Bone mineral content in infants and children with chronic cholestatic liver disease. *Pediatrics* 1993; **91**: 1151-1154
- 8 Chongsrisawat V, Ruttanamongkol P, Chaiwatanarat T, Chandrakamol B, Poovorawan Y. Bone density and 25-hydroxyvitamin D level in extrahepatic biliary atresia. *Pediatr Surg Int* 2001; **17**: 604-608
- 9 Akiyama T, Yamauchi Y. Use of near infrared reflectance spectroscopy in the screening for biliary atresia. *J Pediatr Surg* 1994; **29**: 645-647
- 10 Maki T, Sumasaki R, Matsui, A. Biliary Atresia: Recent Findings. Mass Screening for Biliary Atresia. *Jpn J Pediatr Surg* 1999; **31**: 242-246

S- Editor Song XX L- Editor Webster JR E- Editor Yan JL

## Peritoneal bleeding due to percutaneous transhepatic gallbladder drainage: An autopsy report

Yoko Ihama, Maki Fukazawa, Kenji Ninomiya, Takumi Nagai, Chiaki Fuke, Tetsuji Miyazaki

Yoko Ihama, Maki Fukazawa, Kenji Ninomiya, Takumi Nagai, Chiaki Fuke, Tetsuji Miyazaki, Department of Forensic Medicine, Graduate School of Medicine, University of the Ryukyus, Okinawa 903-0215, Japan

Author contributions: Ihama Y, Fukazawa M and Ninomiya K performed the macroscopic and microscopic examination; Nagai T, Fuke C and Miyazaki T gave clinical and general advices.

Correspondence to: Yoko Ihama, MD, PhD, Department of Forensic Medicine, Graduate School of Medicine, University of the Ryukyus, 207 Uehara, Nishihara, Okinawa 903-0215, Japan. [makino@med.u-ryukyu.ac.jp](mailto:makino@med.u-ryukyu.ac.jp)

Telephone: +81-98-8951141 Fax: +81-98-8951413

Received: February 14, 2012 Revised: October 15, 2012

Accepted: October 22, 2012

Published online: October 27, 2012

**Peer reviewers:** Wahid Wassef, MD, MPH, FACG, UMass Memorial Health Care, Department of Medicine, Division of Gastroenterology, 55 Lake Avenue North, University Campus, Room S6-727, Worcester, MA 01655, United States; Pierce Kah-Hoe Chow, Professor, Department of General Surgery, Singapore General Hospital, Outram Road, Singapore 169608, Singapore

Ihama Y, Fukazawa M, Ninomiya K, Nagai T, Fuke C, Miyazaki T. Peritoneal bleeding due to percutaneous transhepatic gallbladder drainage: An autopsy report. *World J Hepatol* 2012; 4(10): 288-290 Available from: URL: <http://www.wjgnet.com/1948-5182/full/v4/i10/288.htm> DOI: <http://dx.doi.org/10.4254/wjh.v4.i10.288>

### Abstract

A 77-year-old man underwent percutaneous transhepatic gallbladder drainage (PTGBD) for acute cholecystitis as a preoperative procedure; however, he suddenly suffered cardiopulmonary arrest 4 h after the PTGBD and died. There were three centesis scars for the PTGBD, and only one pathway from the most dorsal centesis scar reached the gallbladder. Microscopically, the PTGBD pathway crossed and injured the intrahepatic arterial wall, and hepatic parenchymal bleeding extended along the PTGBD pathway to the inferior surface of the liver. Blood flowed to the peritoneal cavity through a small gap between the liver and gallbladder. Consequently, the PTGBD caused lethal bleeding. When the percutaneous transhepatic cholangio drainage/PTGBD pathway runs close to vessels near the liver surface, it might be necessary to deal with the possibility of rapid and lethal peritoneal bleeding.

© 2012 Baishideng. All rights reserved.

**Key words:** Percutaneous transhepatic gallbladder drainage; Percutaneous transhepatic cholangio drainage; Lethal complication; Autopsy

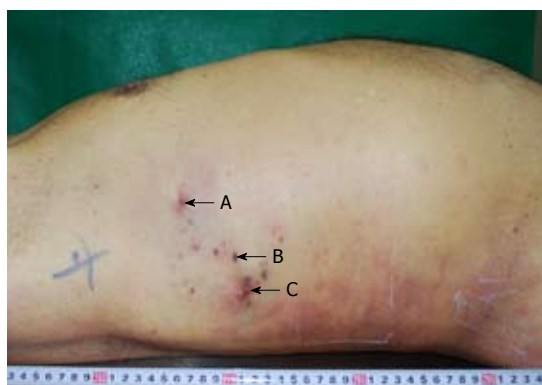
### INTRODUCTION

Percutaneous transhepatic cholangio drainage (PTCD) and percutaneous transhepatic gallbladder drainage (PTGBD) are effective procedures that promptly release congestive bile from the body. The safety and reliability of PTCD/PTGBD have been greatly increased by the use of ultrasonic guidance for centesis<sup>[1]</sup>. Recently, there have been very few reports of deaths directly resulting from PTCD/PTGBD in patients without severe preexisting disease<sup>[2]</sup>. Here we report a patient who died from bleeding shock resulting from PTGBD, and we discuss the causes of the lethal bleeding based on autopsy findings.

### CASE REPORT

A man in his early seventies was admitted to the emergency department of a hospital with the chief complaint of abdominal pain that had been increasing for the past several days. Ultrasonography (US) showed a swelling gallbladder filled with debris and stones. Abdominal CT indicated an invagination of the stones into the neck of the gallbladder. The results of blood chemical tests administered at admission were as follows: white blood cell: 10 000 /L, hemoglobin: 14.5 g/dL, platelet (Plt): 17.6 ×



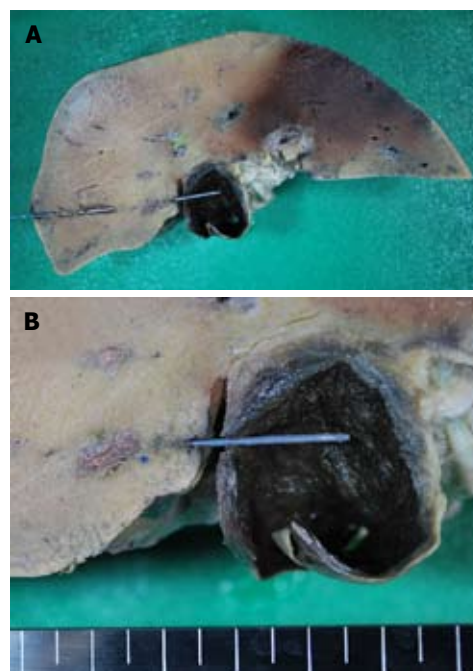


**Figure 1** Three centesis scars on the right side of the chest. As shown in the figure, ventral, middle, and dorsal centeses were assigned as (A), (B) and (C), respectively.

$10^4$ /L, total-bilirubin: 0.6 mg/mL, aspartate aminotransferase: 17 IU/L, alanine aminotransferase: 8 IU/L, lactate Dehydrogenase: 176 IU/L, alkaline phosphatase: 246 IU/L, Amylase: 129 IU/L, C-reactive protein: 7.04 mg/dL. The patient was diagnosed with acute cholecystitis due to bile stones. His general condition was stable. He had no bleeding disorder or coagulation abnormality, and he was not taking anticoagulant agents, such as warfarin or aspirin. Two years earlier, however, he was diagnosed with aortic dissection and from then on had been managed conservatively with antihypertensive agents. In the meantime, ultrasound-guided percutaneous transhepatic gallbladder aspiration or PTGBD was selected as a pre-operative procedure. He had been complaining of severe abdominal pain despite the intravenous administration of pentazosine, an analgesic. Thus he could neither remain still on his back nor hold his breath. With the patient in the left lateral decubitus position, the third centesis finally reached the gallbladder, after two failures of centesis. Because the thick bile or debris in the gallbladder could not be adequately aspirated through a puncture needle, the operators changed their strategy and placed a catheter in the patient for PTGBD. The drainage catheter egested a thick bile, and no dye leakage or hemorrhage was revealed by post-PTGBD radiographic examination. Four hours after PTGBD, the patient suffered a sudden cardiopulmonary arrest in bed. At 14 h after PTGBD, he died despite undergoing intensive care.

### Autopsy findings

The body was 165 cm in length and weighed 90 kg. The abdomen was tense with distension, and there were three puncture scars on the right side (Figure 1). The PTGBD drainage catheter had been removed in the hospital. As shown in Figure 1, the three puncture scars were labeled (A), (B) and (C). Volumes of blood with clots of 1050 mL and 1500 mL were present in the right thoracic and peritoneal cavities, respectively, and large numbers of clots were found around the gallbladder and inferior surface of the liver. The gallbladder wall was thick due to inflammation, and there were approximately 100



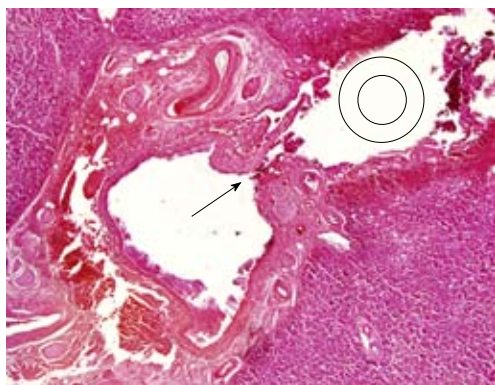
**Figure 2** Frontal section of liver along pathway (C). A: Pathway (C) reaches the gallbladder transversely through the right hepatic lobe; B: Magnified photograph around the gallbladder. A small space between the liver and gallbladder is revealed, and the percutaneous transhepatic gallbladder drainage pathway is partially exposed into the peritoneal cavity. The pathway crosses the intrahepatic connective tissue area near the liver surface.

black stones in the gallbladder. Among the three pathways of centesis, only pathway (C) reached the gallbladder, transversely through the right hepatic lobe (Figure 2A). Macroscopically, pathway (C) crossed interlobular tissue near the liver surface and was exposed to the peritoneal cavity between the liver and gallbladder before entering the gallbladder (Figure 2B). Histological serial cross-sections of pathway (C) revealed that the pathway gradually came close to interlobular vessels and injured an intrahepatic artery (Figure 3). The bleeding from that artery extended along pathway (C) into the peritoneal cavity. The main organs were anemic, and there were no injuries to the other vessels and organs. The endothelial surface of the aorta showed severe atherosclerosis but no dissection.

We attributed the patient's death to abdominal and thoracic bleeding resulting from injury of the intrahepatic artery caused by PTGBD.

### DISCUSSION

Guidelines on the diagnosis and treatment of acute cholangitis and cholecystitis issued in Japan in 2005 and based on scientific evidence, recommend emergency cholecystectomy for acute cholecystitis<sup>[3]</sup>. However, PTCD/PTGBD is an effective procedure for decompressing an obstructed biliary system. Thus preoperative PTCD/PTGBD for acute cholecystitis remains a frequent first-choice therapy<sup>[2]</sup>. According to a study published in 2008, the rates of the technical success of and clinical response



**Figure 3** Microscopic specimen at the crossover site of intrahepatic connective tissue and the percutaneous transhepatic gallbladder drainage pathway (hematoxylin-eosin staining). There is a rupture of the arterial wall near the catheter pathway and intrahepatic bleeding along the percutaneous transhepatic gallbladder drainage pathway. The arrow head shows the point where the intrahepatic artery is ruptured, and the double circle shows a cross section of the catheter on the pathway (C).

to this treatment were 100% and 90%, respectively<sup>[2]</sup>. Potential complications of PTCD/PTGBD can occur because of its invasiveness; the most serious complications are sepsis and bleeding<sup>[4]</sup>. The incidence of hemorrhage related with PTCD/PTGBD has been reported to be 2.5%; however, Burke *et al.*<sup>[4]</sup> estimate that the actual incidence is twice as high as the recorded number. In recent randomized studies by Ito *et al.*<sup>[2]</sup>, the mortality rate after PTCD/PTGBD was found to be 2.2%, and all deaths were caused by preexisting disease, not by PTCD/PTGBD directly. Hemorrhage is not a rare complication of PTCD/PTGBD, but it is not likely to be fatal without there being a preexisting disease. We believe that the present case was an extremely rare and unfortunate accident.

In this case, the death was caused directly by bleeding due to PTGBD. We believe that this death was attributable to two factors: (1) an intrahepatic artery was injured near the surface of the liver; (2) a drainage pathway was partially opened into the peritoneal cavity between the liver and gallbladder. In the liver, many hepatic arteries, central veins and portal veins are entwined as in the mesh of a net; hence, there is always a risk of hemorrhage when performing the PTCD/PTGBD procedure. In this patient, no anatomical aberrations of the hepatic vessels were detected by US or in the autopsy examination. Generally, a PTGBD catheter is inserted into the gallbladder through the gallbladder bed under US<sup>[3]</sup>. Hence, the catheter never enters the peritoneal cavity. However, when the gallbladder is filled with congestive bile and

stones, it is difficult to determine by US whether the pathway runs through the gallbladder bed or not. In this case, the increased tension and swelling of the gallbladder caused us to misread the ultrasound which seemed to show the catheter pathway running through the gallbladder bed. However, the bile drainage shrank the gallbladder, thereby creating a space between the gallbladder and liver. Textbooks recommend that PTGBD be performed from the patient's anterior direction, because following a longitudinal pathway against the gallbladder can reduce the risk that the drainage catheter will protrude from the liver. However, if the patient cannot remain still on his or her back because of the pain, the operator may need to puncture the patient's right side away from the recommended point.

It is not clear when the hepatic artery was ruptured. The ultrasound-guided PTGBD had been performed without vessel injury, and the post-PTGBD examination detected no bleeding in the liver or around the gallbladder. Therefore, we consider that the arterial injury occurred after the drainage catheter was placed. The PTGBD catheter running near the artery damaged the wall of the artery gradually by rubbing against it with slight movements. Since no vessel injury was detected during or soon after the PTCD/PTGBD, it is possible that the drainage catheter damaged the vessel wall after the procedure. In particular, when the PTCD/PTGBD pathway runs in close proximity to vessels near the liver surface, it might be necessary to deal with the possibility of rapid and lethal peritoneal bleeding, not only during but also after the procedure.

## REFERENCES

- 1 Makuuchi M, Yamazaki S, Hasegawa H, Bandai Y, Ito T, Watanabe G. Ultrasonically guided cholangiography and bile drainage. *Ultrasound Med Biol* 1984; **10**: 617-623
- 2 Ito K, Fujita N, Noda Y, Kobayashi G, Obana T, Horaguchi J, Takasawa O. The usefulness of percutaneous cholecystostomy for acute cholecystitis. *JJBA* 2008; **22**: 632-637
- 3 Takada T, Kawarada Y, Nimura Y, Yoshida M, Mayumi T, Sekimoto M, Miura F, Wada K, Hirota M, Yamashita Y, Nagino M, Tsuyuguchi T, Tanaka A, Kimura Y, Yasuda H, Hirata K, Pitt HA, Strasberg SM, Gadsch TR, Bornman PC, Gouma DJ, Belli G, Liau KH. Background: Tokyo Guidelines for the management of acute cholangitis and cholecystitis. *J Hepatobiliary Pancreat Surg* 2007; **14**: 1-10
- 4 Burke DR, Lewis CA, Cardella JF, Citron SJ, Drooz AT, Haskal ZJ, Husted JW, McCowan TC, Van Moore A, Oglevie SB, Sacks D, Spies JB, Towbin RB, Bakal CW. Quality improvement guidelines for percutaneous transhepatic cholangiography and biliary drainage. *J Vasc Interv Radiol* 2003; **14**: S243-S246

S- Editor Song XX L- Editor Webster JR E- Editor Yan JL

## Acknowledgments to reviewers of *World Journal of Hepatology*

We acknowledge our sincere thanks to our reviewers. Many reviewers have contributed their expertise and time to the peer review, a critical process to ensure the quality of our World Series Journals. Both the editors of the journals and authors of the manuscripts submitted to the journals are grateful to the following reviewers for reviewing the articles (either published or rejected) over the past period of time.

**Yasemin Hatice Balaban, Professor**, Hacettepe University, Birlik Mahallesi 415. Sokak Oyak Sitesi No.45/3 Cankaya, Ankara 06570, Turkey

**Ioannis Diamantis, Professor**, University Of Athens, Athens 15238, Greece

**Joan Genescà, Professor**, Liver Unit, Department of Internal Medicine, Hospital Universitari Vall d'Hebron, Passeig Vall d'Hebron 119, Barcelona 08035, Spain

**Dr. Nattiya Hirankarn**, Department of Microbiology, Faculty of Medicine, Chulalongkorn University, Rama 4 road, Bangkok 10330, Thailand

**Olivier Lesur, Professor**, Department of Medicine, University of Sherbrooke, 3001 12e Ave N, Sherbrooke J1H 5N4, Quebec, Canada

**Eiji Miyoshi, Professor**, Osaka University Graduate School of Medicine, Suita 565-0871, Japan

**Dr. Jordi Muntané**, Liver Research Unit, Reina Sofia University Hospital, Córdoba 14004, Spain

**Dr. María Angeles Pajares, PhD**, Department of Metabolismo y Señalización Celular, Instituto de Investigaciones Biomedicas A. Sols (CSIC-UAM), Arturo Duperier 4, Madrid 28029, Spain

**Ali Sazci, Professor**, Department of Medical Biology and Genetics, Faculty of Medicine, University of Kocaeli, Kocaeli 41380, Turkey





## Events Calendar 2012

January 18, 2012

AHPBA Sponsored Consensus  
Conference on the Multidisciplinary  
Treatment of Colorectal Cancer  
Liver Metastases  
San Francisco, CA, United States

January 20-21, 2012

AGA Clinical Congress of  
Gastroenterology and Hepatology:  
Practice, Evidence and Quality in  
2012  
Miami, FL, United States

January 27-28, 2012

28th Annual Meeting of the German  
Association for the Study of the  
Liver  
Hamburg, Germany

January 30-31, 2012

5th International Conference on the  
Management of Patients with Viral  
Hepatitis  
Paris, France

February 8-10, 2012

Stockholm Liver Week 2012  
Stockholm, Sweden

February 16-19, 2012

22nd Conference of the Asian Pacific

Association for the Study of the  
Liver  
Taipei, Taiwan, China

March 16 -17, 2012

Hepatitis Single Topic Conference  
Atlanta, GA, United States

March 16-17, 2012

ESGE - Workshop on Advanced  
Endoscopy with Live  
Demonstrations  
Vienna, Austria

March 31-April 1, 2012

27th Annual New Treatments in  
Chronic Liver Disease  
San Diego, CA, United States

April 18-22, 2012

The International Liver Congress by  
EASL  
Barcelona, Spain

April 27-28, 2012

The European Society for Paediatric  
Gastroenterology, Hepatology and  
Nutrition  
Stockholm, Sweden

May 16-19, 2012

International Liver Transplant  
Society 18th Annual International  
Congress 2012  
San Francisco, CA, United States

May 19-22, 2012

Digestive Disease Week 2012  
San Diego, CA, United States

June 22-23, 2012

EASL Monothematic Conference:  
Vascular Liver Diseases  
Tallin, Estonia

July 1-5, 2012

10th World Congress of the  
International Hepato-Pancreato-  
Biliary Association 2012  
Paris, France

September 5-8, 2012

International Congress of Pediatric  
Hepatology, Gastroenterology and  
Nutrition  
Sharm El-Sheikh, Egypt

September 7-9, 2012

Viral Hepatitis Congress 2012  
Macclesfield, United Kingdom

September 7-9, 2012

The Viral Hepatitis Congress  
Frankfurt, Germany

September 14-16, 2012

The International Liver Cancer  
Association's 6th Annual Conference  
Berlin, Germany

September 20-22, 2012

Prague Hepatology Meeting 2012  
Prague, Czech Republic

September 20-22, 2012

1st World Congress on Controversies  
in the Management of Viral Hepatitis  
Prague, Czech Republic

October 18-20, 2012

2nd World Congress on  
Controversies in the Management of  
Viral Hepatitis  
Berlin, Germany

November 9-13, 2012

AASLD - The Liver Meeting 2012  
Boston, MA, United States

November 9-13, 2012

The Liver Meeting - 63rd Annual  
Meeting and Postgraduate Course  
of the American Association for the  
Study of Liver Diseases  
Boston, MA, United States

November 14-18, 2012

4th World Congress of Pediatric  
Gastroenterology, Hepatology and  
Nutrition  
Taipei, Taiwan, China

December 26-28, 2012

International Conference on  
Gastroenterology, Hepatology and  
Nutrition  
Bangkok, Thailand



## INSTRUCTIONS TO AUTHORS

### GENERAL INFORMATION

*World Journal of Hepatology* (*World J Hepatol*, *WJH*, online ISSN 1948-5182, DOI: 10.4254), is a monthly, open access (OA), peer-reviewed journal supported by an editorial board of 573 experts in hepatology from 46 countries.

The biggest advantage of the OA model is that it provides free, full-text articles in PDF and other formats for experts and the public without registration, which eliminates the obstacle that traditional journals possess and usually delays the speed of the propagation and communication of scientific research results.

#### Maximization of personal benefits

The role of academic journals is to exhibit the scientific levels of a country, a university, a center, a department, and even a scientist, and build an important bridge for communication between scientists and the public. As we all know, the significance of the publication of scientific articles lies not only in disseminating and communicating innovative scientific achievements and academic views, as well as promoting the application of scientific achievements, but also in formally recognizing the "priority" and "copyright" of innovative achievements published, as well as evaluating research performance and academic levels. So, to realize these desired attributes of *WJH* and create a well-recognized journal, the following four types of personal benefits should be maximized. The maximization of personal benefits refers to the pursuit of the maximum personal benefits in a well-considered optimal manner without violation of the laws, ethical rules and the benefits of others. (1) Maximization of the benefits of editorial board members: The primary task of editorial board members is to give a peer review of an unpublished scientific article via online office system to evaluate its innovativeness, scientific and practical values and determine whether it should be published or not. During peer review, editorial board members can also obtain cutting-edge information in that field at first hand. As leaders in their field, they have priority to be invited to write articles and publish commentary articles. We will put peer reviewers' names and affiliations along with the article they reviewed in the journal to acknowledge their contribution; (2) Maximization of the benefits of authors: Since *WJH* is an open-access journal, readers around the world can immediately download and read, free of charge, high-quality, peer-reviewed articles from *WJH* official website, thereby realizing the goals and significance of the communication between authors and peers as well as public reading; (3) Maximization of the benefits of readers: Readers can read or use, free of charge, high-quality peer-reviewed articles without any limits, and cite the arguments, viewpoints, concepts, theories, methods, results, conclusion or facts and data of pertinent literature so as to validate the innovativeness, scientific and practical values of their own research achievements, thus ensuring that their articles have novel arguments or viewpoints, solid evidence and correct conclusion; and (4) Maximization of the benefits of employees: It is an iron law that a first-class journal is unable to exist without first-class editors, and only first-class editors can create a first-class academic journal. We insist on strengthening our team cultivation and construction so that every employee, in an open, fair and transparent environment, could contribute their wisdom to edit and publish high-quality articles, thereby realizing the maximization of the personal benefits of editorial board members, authors and readers, and yielding the greatest social and economic benefits.

#### Aims and scope

The major task of *WJH* is to rapidly report the most recent results in basic and clinical research on hepatology, specifically including autoimmune, cholestatic and biliary disease, cirrhosis and its complications, liver biology/pathobiology, liver failure, growth, liver failure/cirrhosis/portal hypertension, liver fibrosis, hepatitis B and C virus infection, hepatocellular carcinoma, biliary tract disease, transplantation, genetics, epidemiology, microbiology and inflammatory disorders, molecular and cell biology, nutrition, geriatric hepatology, pediatric hepatology, steatohepatitis and metabolic liver disease, diagnosis and screening, endoscopy, imaging and advanced technology.

#### Columns

The columns in the issues of *WJH* will include: (1) Editorial: To introduce and comment on major advances and developments in the field; (2) Frontier: To review representative achievements, comment on the state of current research, and propose directions for future research; (3) Topic Highlight: This column consists of three formats, including (A) 10 invited review articles on a hot topic, (B) a commentary on common issues of this hot topic, and (C) a commentary on the 10 individual articles; (4) Observation: To update the development of old and new questions, highlight unsolved problems, and provide strategies on how to solve the questions; (5) Guidelines for Basic Research: To provide guidelines for basic research; (6) Guidelines for Clinical Practice: To provide guidelines for clinical diagnosis and treatment; (7) Review: To review systemically progress and unresolved problems in the field, comment on the state of current research, and make suggestions for future work; (8) Original Article: To report innovative and original findings in hepatology; (9) Brief Article: To briefly report the novel and innovative findings in hepatology; (10) Case Report: To report a rare or typical case; (11) Letters to the Editor: To discuss and make reply to the contributions published in *WJH*, or to introduce and comment on a controversial issue of general interest; (12) Book Reviews: To introduce and comment on quality monographs of hepatology; and (13) Guidelines: To introduce consensus and guidelines reached by international and national academic authorities worldwide on basic research and clinical practice in hepatology.

#### Name of journal

*World Journal of Hepatology*

#### ISSN

ISSN 1948-5182 (online)

#### Editor-in-chief

**Masatoshi Kudo, MD, PhD, Professor**, Department of Gastroenterology and Hepatology, Kinki University School of Medicine, 377-2, Ohno-Higashi, Osaka-Sayama, 589-8511, Osaka, Japan

#### Editorial office

*World Journal of Hepatology*

Editorial Department: Room 903, Building D,  
Ocean International Center,  
No. 62 Dongsihuan Zhonglu,

## Instructions to authors

Chaoyang District, Beijing 100025, China  
Telephone: +86-10-85381892  
Fax: +86-10-85381893  
E-mail: wjh@wjgnet.com  
<http://www.wjgnet.com>

### **Indexed and abstracted in**

PubMed Central, PubMed, Digital Object Identifier, and Directory of OA Journals.

### **Published by**

Baishideng Publishing Group Co., Limited

## **SPECIAL STATEMENT**

All articles published in this journal represent the viewpoints of the authors except where indicated otherwise.

### **Biostatistical editing**

Statistical review is performed after peer review. We invite an expert in Biomedical Statistics to evaluate the statistical method used in the paper, including *t*-test (group or paired comparisons), chi-squared test, Redit, probit, logit, regression (linear, curvilinear, or stepwise), correlation, analysis of variance, analysis of covariance, *etc.* The reviewing points include: (1) Statistical methods should be described when they are used to verify the results; (2) Whether the statistical techniques are suitable or correct; (3) Only homogeneous data can be averaged. Standard deviations are preferred to standard errors. Give the number of observations and subjects (*n*). Losses in observations, such as drop-outs from the study should be reported; (4) Values such as ED50, LD50, IC50 should have their 95% confidence limits calculated and compared by weighted probit analysis (Bliss and Finney); and (5) The word 'significantly' should be replaced by its synonyms (if it indicates extent) or the *P* value (if it indicates statistical significance).

### **Conflict-of-interest statement**

In the interests of transparency and to help reviewers assess any potential bias, *WJH* requires authors of all papers to declare any competing commercial, personal, political, in intellectual, or religious interests in relation to the submitted work. Referees are also asked to indicate any potential conflict they might have reviewing a particular paper. Before submitting, authors are suggested to read "Uniform Requirements for Manuscripts Submitted to Biomedical Journals: Ethical Considerations in the Conduct and Reporting of Research: Conflicts of Interest" from International Committee of Medical Journal Editors (ICMJE), which is available at: [http://www.icmje.org/ethical\\_4conflicts.html](http://www.icmje.org/ethical_4conflicts.html).

Sample wording: [Name of individual] has received fees for serving as a speaker, a consultant and an advisory board member for [names of organizations], and has received research funding from [names of organization]. [Name of individual] is an employee of [name of organization]. [Name of individual] owns stocks and shares in [name of organization]. [Name of individual] owns patent [patent identification and brief description].

### **Statement of informed consent**

Manuscripts should contain a statement to the effect that all human studies have been reviewed by the appropriate ethics committee or it should be stated clearly in the text that all persons gave their informed consent prior to their inclusion in the study. Details that might disclose the identity of the subjects under study should be omitted. Authors should also draw attention to the Code of Ethics of the World Medical Association (Declaration of Helsinki, 1964, as revised in 2004).

### **Statement of human and animal rights**

When reporting the results from experiments, authors should follow the highest standards and the trial should conform to Good Clinical Practice (for example, US Food and Drug Administration Good Clinical Practice in FDA-Regulated

Clinical Trials; UK Medicines Research Council Guidelines for Good Clinical Practice in Clinical Trials) and/or the World Medical Association Declaration of Helsinki. Generally, we suggest authors follow the lead investigator's national standard. If doubt exists whether the research was conducted in accordance with the above standards, the authors must explain the rationale for their approach and demonstrate that the institutional review body explicitly approved the doubtful aspects of the study.

Before submitting, authors should make their study approved by the relevant research ethics committee or institutional review board. If human participants were involved, manuscripts must be accompanied by a statement that the experiments were undertaken with the understanding and appropriate informed consent of each. Any personal item or information will not be published without explicit consents from the involved patients. If experimental animals were used, the materials and methods (experimental procedures) section must clearly indicate that appropriate measures were taken to minimize pain or discomfort, and details of animal care should be provided.

## **SUBMISSION OF MANUSCRIPTS**

Manuscripts should be typed in 1.5 line spacing and 12 pt. Book Antiqua with ample margins. Number all pages consecutively, and start each of the following sections on a new page: Title Page, Abstract, Introduction, Materials and Methods, Results, Discussion, Acknowledgements, References, Tables, Figures, and Figure Legends. Neither the editors nor the publisher are responsible for the opinions expressed by contributors. Manuscripts formally accepted for publication become the permanent property of Baishideng Publishing Group Co., Limited, and may not be reproduced by any means, in whole or in part, without the written permission of both the authors and the publisher. We reserve the right to copy-edit and put onto our website accepted manuscripts. Authors should follow the relevant guidelines for the care and use of laboratory animals of their institution or national animal welfare committee. For the sake of transparency in regard to the performance and reporting of clinical trials, we endorse the policy of the International Committee of Medical Journal Editors to refuse to publish papers on clinical trial results if the trial was not recorded in a publicly-accessible registry at its outset. The only register now available, to our knowledge, is <http://www.clinicaltrials.gov> sponsored by the United States National Library of Medicine and we encourage all potential contributors to register with it. However, in the case that other registers become available you will be duly notified. A letter of recommendation from each author's organization should be provided with the contributed article to ensure the privacy and secrecy of research is protected.

Authors should retain one copy of the text, tables, photographs and illustrations because rejected manuscripts will not be returned to the author(s) and the editors will not be responsible for loss or damage to photographs and illustrations sustained during mailing.

### **Online submissions**

Manuscripts should be submitted through the Online Submission System at: <http://www.wjgnet.com/esps/>. Authors are highly recommended to consult the ONLINE INSTRUCTIONS TO AUTHORS ([http://www.wjgnet.com/1948-5182/g\\_info\\_20100316080002.htm](http://www.wjgnet.com/1948-5182/g_info_20100316080002.htm)) before attempting to submit online. For assistance, authors encountering problems with the Online Submission System may send an email describing the problem to [wjh@wjgnet.com](mailto:wjh@wjgnet.com), or by telephone: +86-10-85381892. If you submit your manuscript online, do not make a postal contribution. Repeated online submission for the same manuscript is strictly prohibited.

## **MANUSCRIPT PREPARATION**

All contributions should be written in English. All articles must be submitted using word-processing software. All submissions must be typed in 1.5 line spacing and 12 pt. Book Antiqua with

ample margins. Style should conform to our house format. Required information for each of the manuscript sections is as follows:

### Title page

**Title:** Title should be less than 12 words.

**Running title:** A short running title of less than 6 words should be provided.

**Authorship:** Authorship credit should be in accordance with the standard proposed by International Committee of Medical Journal Editors, based on (1) substantial contributions to conception and design, acquisition of data, or analysis and interpretation of data; (2) drafting the article or revising it critically for important intellectual content; and (3) final approval of the version to be published. Authors should meet conditions 1, 2, and 3.

**Institution:** Author names should be given first, then the complete name of institution, city, province and postcode. For example, Xu-Chen Zhang, Li-Xin Mei, Department of Pathology, Chengde Medical College, Chengde 067000, Hebei Province, China. One author may be represented from two institutions, for example, George Sgourakis, Department of General, Visceral, and Transplantation Surgery, Essen 45122, Germany; George Sgourakis, 2nd Surgical Department, Korgialenio-Benakio Red Cross Hospital, Athens 15451, Greece

**Author contributions:** The format of this section should be: Author contributions: Wang CL and Liang L contributed equally to this work; Wang CL, Liang L, Fu JF, Zou CC, Hong F and Wu XM designed the research; Wang CL, Zou CC, Hong F and Wu XM performed the research; Xue JZ and Lu JR contributed new reagents/analytic tools; Wang CL, Liang L and Fu JF analyzed the data; and Wang CL, Liang L and Fu JF wrote the paper.

**Supportive foundations:** The complete name and number of supportive foundations should be provided, e.g., Supported by National Natural Science Foundation of China, No. 30224801

**Correspondence to:** Only one corresponding address should be provided. Author names should be given first, then author title, affiliation, the complete name of institution, city, postcode, province, country, and email. All the letters in the email should be in lower case. A space interval should be inserted between country name and email address. For example, Montgomery Bissell, MD, Professor of Medicine, Chief, Liver Center, Gastroenterology Division, University of California, Box 0538, San Francisco, CA 94143, United States. montgomery.bissell@ucsf.edu

**Telephone and fax:** Telephone and fax should consist of +, country number, district number and telephone or fax number, e.g., Telephone: +86-10-85381892 Fax: +86-10-85381893

**Peer reviewers:** All articles received are subject to peer review. Normally, three experts are invited for each article. Decision for acceptance is made only when at least two experts recommend an article for publication. Reviewers for accepted manuscripts are acknowledged in each manuscript, and reviewers of articles which were not accepted will be acknowledged at the end of each issue. To ensure the quality of the articles published in *WJH*, reviewers of accepted manuscripts will be announced by publishing the name, title/position and institution of the reviewer in the footnote accompanying the printed article. For example, reviewers: Professor Jing-Yuan Fang, Shanghai Institute of Digestive Disease, Shanghai, Affiliated Renji Hospital, Medical Faculty, Shanghai Jiaotong University, Shanghai, China; Professor Xin-Wei Han, Department of Radiology, The First Affiliated Hospital, Zhengzhou University, Zhengzhou, Henan

Province, China; and Professor Anren Kuang, Department of Nuclear Medicine, Huaxi Hospital, Sichuan University, Chengdu, Sichuan Province, China.

### Abstract

There are unstructured abstracts (no less than 256 words) and structured abstracts (no less than 480). The specific requirements for structured abstracts are as follows:

An informative, structured abstracts of no less than 480 words should accompany each manuscript. Abstracts for original contributions should be structured into the following sections. AIM (no more than 20 words): Only the purpose should be included. Please write the aim as the form of "To investigate/study/...; MATERIALS AND METHODS (no less than 140 words); RESULTS (no less than 294 words): You should present *P* values where appropriate and must provide relevant data to illustrate how they were obtained, e.g.  $6.92 \pm 3.86$  vs  $3.61 \pm 1.67$ ,  $P < 0.001$ ; CONCLUSION (no more than 26 words).

### Key words

Please list 5-10 key words, selected mainly from *Index Medicus*, which reflect the content of the study.

### Text

For articles of these sections, original articles, rapid communication and case reports, the main text should be structured into the following sections: INTRODUCTION, MATERIALS AND METHODS, RESULTS and DISCUSSION, and should include appropriate Figures and Tables. Data should be presented in the main text or in Figures and Tables, but not in both. The main text format of these sections, editorial, topic highlight, case report, letters to the editors, can be found at: [http://www.wjgnet.com/1948-5182/g\\_info\\_list.htm](http://www.wjgnet.com/1948-5182/g_info_list.htm).

### Illustrations

Figures should be numbered as 1, 2, 3, *etc.*, and mentioned clearly in the main text. Provide a brief title for each figure on a separate page. Detailed legends should not be provided under the figures. This part should be added into the text where the figures are applicable. Figures should be either Photoshop or Illustrator files (in tiff, eps, jpeg formats) at high-resolution. Examples can be found at: <http://www.wjgnet.com/1007-9327/13/4520.pdf>; <http://www.wjgnet.com/1007-9327/13/4554.pdf>; <http://www.wjgnet.com/1007-9327/13/4891.pdf>; <http://www.wjgnet.com/1007-9327/13/4986.pdf>; <http://www.wjgnet.com/1007-9327/13/4498.pdf>. Keeping all elements compiled is necessary in line-art image. Scale bars should be used rather than magnification factors, with the length of the bar defined in the legend rather than on the bar itself. File names should identify the figure and panel. Avoid layering type directly over shaded or textured areas. Please use uniform legends for the same subjects. For example: Figure 1 Pathological changes in atrophic gastritis after treatment. A:...; B:...; C:...; D:...; E:...; F:...; G: ...*etc.* It is our principle to publish high resolution-figures for the printed and E-versions.

### Tables

Three-line tables should be numbered 1, 2, 3, *etc.*, and mentioned clearly in the main text. Provide a brief title for each table. Detailed legends should not be included under tables, but rather added into the text where applicable. The information should complement, but not duplicate the text. Use one horizontal line under the title, a second under column heads, and a third below the Table, above any footnotes. Vertical and italic lines should be omitted.

### Notes in tables and illustrations

Data that are not statistically significant should not be noted. <sup>a</sup>*P* < 0.05, <sup>b</sup>*P* < 0.01 should be noted (*P* > 0.05 should not be noted). If there are other series of *P* values, <sup>c</sup>*P* < 0.05 and <sup>d</sup>*P* < 0.01 are used. A third series of *P* values can be expressed as <sup>e</sup>*P*



## Instructions to authors

$< 0.05$  and  $^{\dagger}P < 0.01$ . Other notes in tables or under illustrations should be expressed as  $^1F$ ,  $^2F$ ,  $^3F$ ; or sometimes as other symbols with a superscript (Arabic numerals) in the upper left corner. In a multi-curve illustration, each curve should be labeled with  $\bullet$ ,  $\circ$ ,  $\blacksquare$ ,  $\square$ ,  $\blacktriangle$ ,  $\triangle$ , etc., in a certain sequence.

### Acknowledgments

Brief acknowledgments of persons who have made genuine contributions to the manuscript and who endorse the data and conclusions should be included. Authors are responsible for obtaining written permission to use any copyrighted text and/or illustrations.

## REFERENCES

### Coding system

The author should number the references in Arabic numerals according to the citation order in the text. Put reference numbers in square brackets in superscript at the end of citation content or after the cited author's name. For citation content which is part of the narration, the coding number and square brackets should be typeset normally. For example, "Crohn's disease (CD) is associated with increased intestinal permeability<sup>[1,2]</sup>". If references are cited directly in the text, they should be put together within the text, for example, "From references<sup>[19,22-24]</sup>, we know that..."

When the authors write the references, please ensure that the order in text is the same as in the references section, and also ensure the spelling accuracy of the first author's name. Do not list the same citation twice.

### PMID and DOI

Please provide PubMed citation numbers to the reference list, e.g. PMID and DOI, which can be found at <http://www.ncbi.nlm.nih.gov/sites/entrez?db=pubmed> and <http://www.crossref.org/SimpleTextQuery/>, respectively. The numbers will be used in E-version of this journal.

### Style for journal references

Authors: the name of the first author should be typed in bold-faced letters. The family name of all authors should be typed with the initial letter capitalized, followed by their abbreviated first and middle initials. (For example, Lian-Sheng Ma is abbreviated as Ma LS, Bo-Rong Pan as Pan BR). The title of the cited article and italicized journal title (journal title should be in its abbreviated form as shown in PubMed), publication date, volume number (in black), start page, and end page [PMID: 11819634 DOI: 10.3748/wjg.13.5396].

### Style for book references

Authors: the name of the first author should be typed in bold-faced letters. The surname of all authors should be typed with the initial letter capitalized, followed by their abbreviated middle and first initials. (For example, Lian-Sheng Ma is abbreviated as Ma LS, Bo-Rong Pan as Pan BR) Book title. Publication number. Publication place: Publication press, Year: start page and end page.

### Format

#### Journals

English journal article (list all authors and include the PMID where applicable)

- 1 **Jung EM**, Clevert DA, Schreyer AG, Schmitt S, Rennert J, Kubale R, Feuerbach S, Jung F. Evaluation of quantitative contrast harmonic imaging to assess malignancy of liver tumors: A prospective controlled two-center study. *World J Gastroenterol* 2007; **13**: 6356-6364 [PMID: 18081224 DOI: 10.3748/wjg.13.6356]

Chinese journal article (list all authors and include the PMID where applicable)

- 2 **Lin GZ**, Wang XZ, Wang P, Lin J, Yang FD. Immunologic effect of Jianpi Yishen decoction in treatment of Pixu-diarrhoea. *Shijie Huaren Xiaobua Zazhi* 1999; **7**: 285-287

#### In press

- 3 **Tian D**, Araki H, Stahl E, Bergelson J, Kreitman M. Signature of balancing selection in Arabidopsis. *Proc Natl Acad Sci USA* 2006; In press

#### Organization as author

- 4 **Diabetes Prevention Program Research Group**. Hypertension, insulin, and proinsulin in participants with impaired glucose tolerance. *Hypertension* 2002; **40**: 679-686 [PMID: 12411462 PMCID:2516377 DOI:10.1161/01.HYP.0000035706.28494.09]

#### Both personal authors and an organization as author

- 5 **Vallancien G**, Emberton M, Harving N, van Moorselaar RJ; Alf-One Study Group. Sexual dysfunction in 1, 274 European men suffering from lower urinary tract symptoms. *J Urol* 2003; **169**: 2257-2261 [PMID: 12771764 DOI:10.1097/01.ju.0000067940.76090.73]

#### No author given

- 6 21st century heart solution may have a sting in the tail. *BMJ* 2002; **325**: 184 [PMID: 12142303 DOI:10.1136/bmj.325.7357.184]

#### Volume with supplement

- 7 **Geraud G**, Spierings EL, Keywood C. Tolerability and safety of frovatriptan with short- and long-term use for treatment of migraine and in comparison with sumatriptan. *Headache* 2002; **42** Suppl 2: S93-99 [PMID: 12028325 DOI:10.1046/j.1526-4610.42.s2.7.x]

#### Issue with no volume

- 8 **Banit DM**, Kaufer H, Hartford JM. Intraoperative frozen section analysis in revision total joint arthroplasty. *Clin Orthop Relat Res* 2002; **(401)**: 230-238 [PMID: 12151900 DOI:10.1097/00003086-200208000-00026]

#### No volume or issue

- 9 Outreach: Bringing HIV-positive individuals into care. *HRSA Careaction* 2002; 1-6 [PMID: 12154804]

### Books

#### Personal author(s)

- 10 **Sherlock S**, Dooley J. Diseases of the liver and biliary system. 9th ed. Oxford: Blackwell Sci Pub, 1993: 258-296

#### Chapter in a book (list all authors)

- 11 **Lam SK**. Academic investigator's perspectives of medical treatment for peptic ulcer. In: Swabb EA, Azabo S. Ulcer disease: investigation and basis for therapy. New York: Marcel Dekker, 1991: 431-450

#### Author(s) and editor(s)

- 12 **Breedlove GK**, Schorfheide AM. Adolescent pregnancy. 2nd ed. Wiczorek RR, editor. White Plains (NY): March of Dimes Education Services, 2001: 20-34

#### Conference proceedings

- 13 **Harnden P**, Joffe JK, Jones WG, editors. Germ cell tumours V. Proceedings of the 5th Germ cell tumours Conference; 2001 Sep 13-15; Leeds, UK. New York: Springer, 2002: 30-56

#### Conference paper

- 14 **Christensen S**, Oppacher F. An analysis of Koza's computational effort statistic for genetic programming. In: Foster JA, Lutton E, Miller J, Ryan C, Tettamanzi AG, editors. Genetic programming. EuroGP 2002: Proceedings of the 5th European Conference on Genetic Programming; 2002 Apr 3-5; Kinsdale, Ireland. Berlin: Springer, 2002: 182-191

#### Electronic journal (list all authors)

- 15 Morse SS. Factors in the emergence of infectious diseases. *Emerg Infect Dis* serial online, 1995-01-03, cited 1996-06-05; 1(1): 24 screens. Available from: URL: <http://www.cdc.gov/ncidod/eid/index.htm>

#### Patent (list all authors)

- 16 **Pagedas AC**, inventor; Ancel Surgical R&D Inc., assignee. Flexible endoscopic grasping and cutting device and positioning tool assembly. United States patent US 20020103498. 2002 Aug 1

### Statistical data

Write as mean  $\pm$  SD or mean  $\pm$  SE.

**Statistical expression**

Express *t* test as *t* (in italics), *F* test as *F* (in italics), chi square test as  $\chi^2$  (in Greek), related coefficient as *r* (in italics), degree of freedom as *ν* (in Greek), sample number as *n* (in italics), and probability as *P* (in italics).

**Units**

Use SI units. For example: body mass, *m* (B) = 78 kg; blood pressure, *p* (B) = 16.2/12.3 kPa; incubation time, *t* (incubation) = 96 h, blood glucose concentration, *c* (glucose)  $6.4 \pm 2.1$  mmol/L; blood CEA mass concentration, *p* (CEA) =  $8.6 \pm 24.5$  μg/L; CO<sub>2</sub> volume fraction, 50 mL/L CO<sub>2</sub>, not 5% CO<sub>2</sub>; likewise for 40 g/L formaldehyde, not 10% formalin; and mass fraction, 8 ng/g, *etc.* Arabic numerals such as 23, 243, 641 should be read 23 243 641.

The format for how to accurately write common units and quantum numbers can be found at: [http://www.wjgnet.com/1948-5182/g\\_info\\_20100107115140.htm](http://www.wjgnet.com/1948-5182/g_info_20100107115140.htm).

**Abbreviations**

Standard abbreviations should be defined in the abstract and on first mention in the text. In general, terms should not be abbreviated unless they are used repeatedly and the abbreviation is helpful to the reader. Permissible abbreviations are listed in Units, Symbols and Abbreviations: A Guide for Biological and Medical Editors and Authors (Ed. Baron DN, 1988) published by The Royal Society of Medicine, London. Certain commonly used abbreviations, such as DNA, RNA, HIV, LD50, PCR, HBV, ECG, WBC, RBC, CT, ESR, CSF, IgG, ELISA, PBS, ATP, EDTA, mAb, can be used directly without further explanation.

**Italics**

Quantities: *t* time or temperature, *c* concentration, *A* area, *l* length, *m* mass, *V* volume.

Genotypes: *gyrA*, *arg 1*, *c myc*, *c fos*, *etc.*

Restriction enzymes: *EcoRI*, *HindII*, *BamHI*, *Kho I*, *Kpn I*, *etc.*

Biology: *H. pylori*, *E. coli*, *etc.*

**Examples for paper writing**

**Editorial:** [http://www.wjgnet.com/1948-5182/g\\_info\\_20100316080004.htm](http://www.wjgnet.com/1948-5182/g_info_20100316080004.htm)

**Frontier:** [http://www.wjgnet.com/1948-5182/g\\_info\\_20100315103153.htm](http://www.wjgnet.com/1948-5182/g_info_20100315103153.htm)

**Topic highlight:** [http://www.wjgnet.com/1948-5182/g\\_info\\_20100316080006.htm](http://www.wjgnet.com/1948-5182/g_info_20100316080006.htm)

**Observation:** [http://www.wjgnet.com/1948-5182/g\\_info\\_20100107112630.htm](http://www.wjgnet.com/1948-5182/g_info_20100107112630.htm)

**Guidelines for basic research:** [http://www.wjgnet.com/1948-5182/g\\_info\\_20100315103748.htm](http://www.wjgnet.com/1948-5182/g_info_20100315103748.htm)

**Guidelines for clinical practice:** [http://www.wjgnet.com/1948-5182/g\\_info\\_20100315103829.htm](http://www.wjgnet.com/1948-5182/g_info_20100315103829.htm)

**Review:** [http://www.wjgnet.com/1948-5182/g\\_info\\_20100107112834.htm](http://www.wjgnet.com/1948-5182/g_info_20100107112834.htm)

**Original articles:** [http://www.wjgnet.com/1948-5182/g\\_info\\_20100107113351.htm](http://www.wjgnet.com/1948-5182/g_info_20100107113351.htm)

**Brief articles:** [http://www.wjgnet.com/1948-5182/g\\_info\\_20100315104523.htm](http://www.wjgnet.com/1948-5182/g_info_20100315104523.htm)

**Case report:** [http://www.wjgnet.com/1948-5182/g\\_info\\_20100107113649.htm](http://www.wjgnet.com/1948-5182/g_info_20100107113649.htm)

**Letters to the editor:** [http://www.wjgnet.com/1948-5182/g\\_info\\_20100107114003.htm](http://www.wjgnet.com/1948-5182/g_info_20100107114003.htm)

**Book reviews:** [http://www.wjgnet.com/1948-5182/g\\_info\\_20100315105017.htm](http://www.wjgnet.com/1948-5182/g_info_20100315105017.htm)

**Guidelines:** [http://www.wjgnet.com/1948-5182/g\\_info\\_20100315105107.htm](http://www.wjgnet.com/1948-5182/g_info_20100315105107.htm)

**SUBMISSION OF THE REVISED MANUSCRIPTS AFTER ACCEPTED**

Please revise your article according to the revision policies of *WJH*. The revised version including manuscript and high-resolution image figures (if any) should be re-submitted online (<http://www.wjgnet.com/1948-5182office/>). The author should send the copyright transfer letter, responses to the reviewers, English language Grade B certificate (for non-native speakers of English) and final manuscript checklist to [wjh@wjgnet.com](mailto:wjh@wjgnet.com).

**Language evaluation**

The language of a manuscript will be graded before it is sent for revision. (1) Grade A: priority publishing; (2) Grade B: minor language polishing; (3) Grade C: a great deal of language polishing needed; and (4) Grade D: rejected. Revised articles should reach Grade A or B.

**Copyright assignment form**

Please download a Copyright assignment form from [http://www.wjgnet.com/1948-5182/g\\_info\\_20100107114726.htm](http://www.wjgnet.com/1948-5182/g_info_20100107114726.htm).

**Responses to reviewers**

Please revise your article according to the comments/suggestions provided by the reviewers. The format for responses to the reviewers' comments can be found at: [http://www.wjgnet.com/1948-5182/g\\_info\\_20100107114601.htm](http://www.wjgnet.com/1948-5182/g_info_20100107114601.htm).

**Proof of financial support**

For paper supported by a foundation, authors should provide a copy of the document and serial number of the foundation.

**Links to documents related to the manuscript**

*WJH* will be initiating a platform to promote dynamic interactions between the editors, peer reviewers, readers and authors. After a manuscript is published online, links to the PDF version of the submitted manuscript, the peer-reviewers' report and the revised manuscript will be put on-line. Readers can make comments on the peer reviewer's report, authors' responses to peer reviewers, and the revised manuscript. We hope that authors will benefit from this feedback and be able to revise the manuscript accordingly in a timely manner.

**Science news releases**

Authors of accepted manuscripts are suggested to write a science news item to promote their articles. The news will be released rapidly at EurekaAlert/AAAS (<http://www.eurekalert.org>). The title for news items should be less than 90 characters; the summary should be less than 75 words; and main body less than 500 words. Science news items should be lawful, ethical, and strictly based on your original content with an attractive title and interesting pictures.

**Publication fee**

*WJH* is an international, peer-reviewed, OA, online journal. Articles published by this journal are distributed under the terms of the Creative Commons Attribution Non-commercial License, which permits use, distribution, and reproduction in any medium, provided the original work is properly cited, the use is non commercial and is otherwise in compliance with the license. Authors of accepted articles must pay a publication fee. Publication fee: 600 USD per article. Editorial, topic highlights, book reviews and letters to the editor are published free of charge.